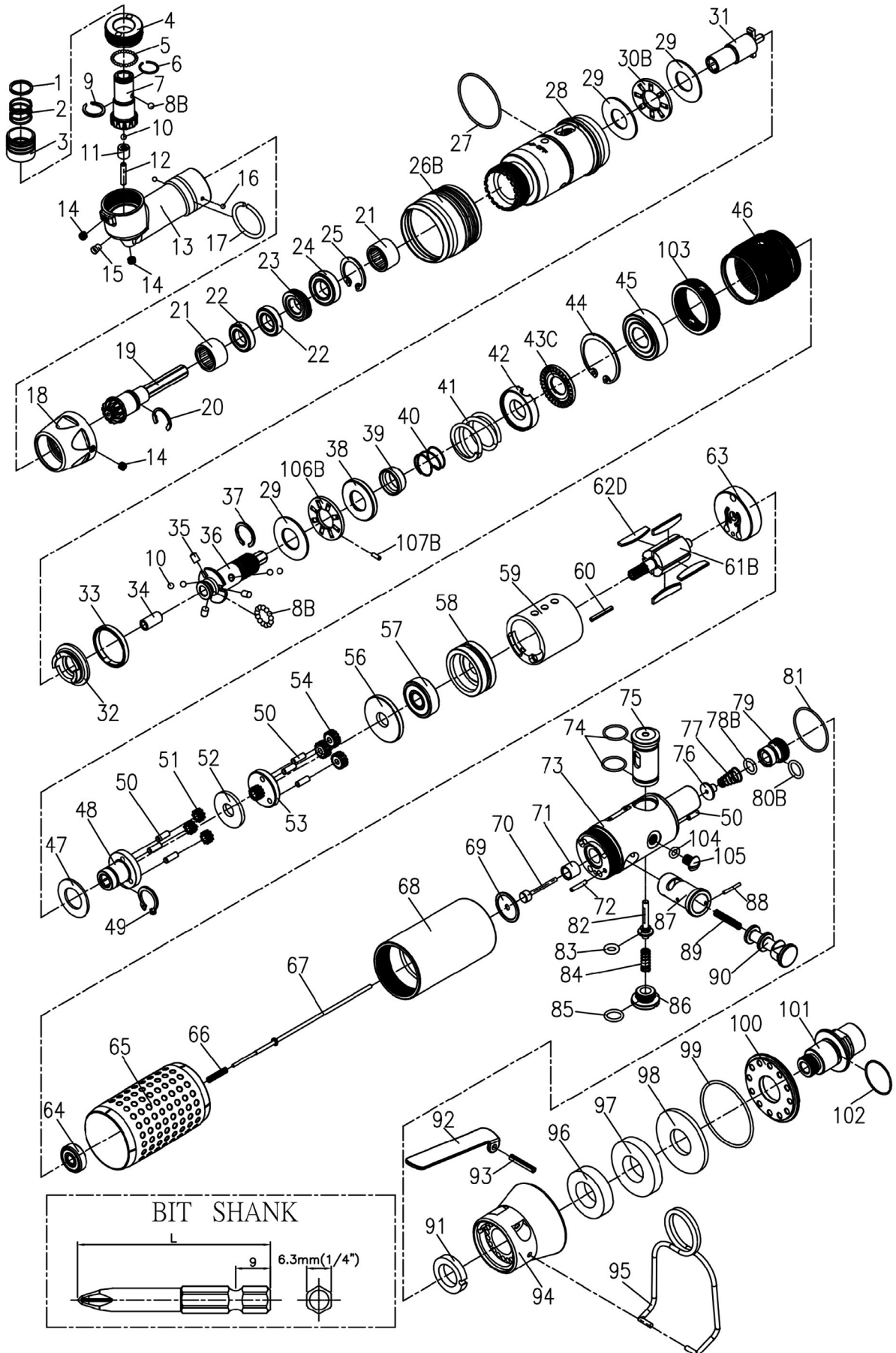


RRI-SA10902

SCREWDRIVER (ANGLE TYPE)

EDITION: D



RRI-SA10902 SCREWDRIVER (ANGLE TYPE)

EDITION: D

Index No.	Part No.	Description	Q'ty
1	B20S-415	Spring Washer	1
2	B20S-418	Spring	1
3	B20S-417	Quick Change Holder	1
4	CS20R-706	Lock Nut	1
5	00-3827	Steel Ball(Ø1/16")	26
6	B20S-428B	Anvil Collar B	1
7	B20R-705	Spiral Bevel Gear	1
8B	00-3835	Steel Ball(Ø2.5)	14
9	B20S-428A	Anvil Collar A	1
10	00-3826	Steel Ball(Ø3)	5
11	00-2416	Needle Bearing(HK0306)	1
12	00-3454	Pin(Ø3x14L)	1
13	CS20R-701	Angle Housing	1
14	00-0605	Screw(M4x4L)	3
15	00-4603	Grease Fitting(1/8")	1
16	00-3828	Steel Ball(Ø2)	2
17	CS20R-708	Anvil Collar	1
18	CS20R-702	Lock Nut	1
19	B20R-704	Spiral Bevel Gear	1
20	00-3513	Snap Ring(C46)	1
21	00-2415	Needle Bearing(HK1210)	2
22	00-2377	Ball Bearing(Ø17xØ9x4t)	2
23	CS20R-709	Lock Nut	1
24	00-2380	Ball Bearing(6800ZØ19xØ10x5t)	1
25	00-3117	Snap Ring(R19)	1
26B	B20S-207	Adjusting Cover	1
27	00-41222	O-Ring(Ø25xØ2)	1
28	B10R-201	Clutch Housing	1
29	00-1516	Washer(Ø12xØ26x1t)	3
30B	00-2804	Roller Bearing(NTB122601)	1
31	B20R-405	Anvil	1
32	B20S-425	Clutch Ring	1
33	B20S-424	Ejector Ring	1
34	00-6301	DU Bearing(Ø4xØ6x6L)	1
35	B20S-426	Ejector Pin	3
36	B10S-416	Transmission Shaft	1
37	B20S-428C	Anvil Collar C	1
38	B20S-433	Spring Seat	1
39	B20S-449	Control Ring	1
40	B20S-427	Spring	1
41	B10S-429	Spring	1
42	B20S-431	Adjusting Lock Ring	1
43C	B20S-430-B	Adjusting Nut	1
44	00-3110	Snap Ring(R22)	1
45	00-2318A	Ball Bearing(EE3 Ø9.5xØ22.2x5.56t)	1
46	B10S-440	Internal Gear	1
47	C10S-441	Washer	1
48	C10S-442	Front Gear Cage	1
49	00-3512	Snap Ring(C37)	1
50	00-3448	Pin(Ø2.5x8L)	7
51	C10S-443A	Planet Gear A	3
52	C10S-444	Washer	1
53	C10S-452	Rear Gear Cage	1
54	C10S-443B	Planet Gear B	3

Index No.	Part No.	Description	Q'ty
56	C10S-448	Rear Cover	1
57	00-2323	Ball Bearing(626ZZ Ø19xØ6x6t)	1
58	C10S-301	Front Plate	1
59	C10S-302	Cylinder	1
60	00-3362	Spring Pin(Ø1.5x16)	1
61B	CS10S-303	Rotor	1
62D	BD10S-304D	Rotor Blade	4
63	C10S-305	Rear Plate	1
64	00-2370	Ball Bearing(695Z Ø13xØ5x4t)	1
65	B10S-103	Housing Rubber	1
66	CS20SL-317	Spring	1
67	B10SL-314	Valve Stem	1
68	C10S-101	Motor Housing	1
69	C10SL-525	Washer	1
70	CS10SL-527	Piston	1
71	C20SL-526	Guide Ring	1
72	00-3447	Pin(Ø2x12L)	1
73	B10SL-518	Seat	1
74	00-41180	O-Ring(Ø9xØ1)	2
75	C10SL-530	Valve	1
76	CS10SL-514	Shut Block	1
77	CS20SL-515	Spring	1
78B	00-41256	O-Ring(Ø4.5xØ1.5)	1
79	C10SL-531	Air Inlet Valve	1
80B	00-41255	O-Ring(Ø6.5xØ1.5)	1
81	00-41225	O-Ring(Ø25xØ27x Ø1)	1
82	C10SL-510	Pin	1
83	00-41178	O-Ring(Ø2.5xØ1.5)	1
84	C20S-450	Spring	1
85	00-41140	O-Ring(Ø5.5xØ1.5)	1
86	C10SL-529	Screw Cap	1
87	C10S-501	Valve Sleeve	1
88	00-3366	Spring Pin(Ø1.5x10L)	1
89	C20S-528	Spring	1
90	C10S-502	Reverse Valve	1
91	C10S-601	Muffler	1
92	C08SL-504	Trigger	1
93	00-3308	Spring Pin(Ø3x18L)	1
94	B10SL-603	Exhaust Deflector	1
95	B20S-102	Hanger	1
96	B10S-601A	Muffler	1
97	B10S-601B	Muffler	1
98	B10S-601C	Muffler	1
99	00-4174	O-Ring(Ø31xØ1.5)	1
100	B10S-608	Deflector Cap	1
101	B10S-604A	Air Inlet 1/4"-PF19	1
	B10S-604B	Air Inlet 1/4"-PT19	
	B10S-604C	Air Inlet 1/4"-NPT18	
102	00-4157	O-Ring(Ø10x13xØ1.5)	1
103	B10R-413	Thread Bushing	1
104	00-41156	O-Ring(Ø3.5xØ1.5)	1
105	00-1304	Screw(M5x6L)	1
106B	B20S-410	Washer	1
107B	00-3471	Pin(Ø2.5x4L)	8