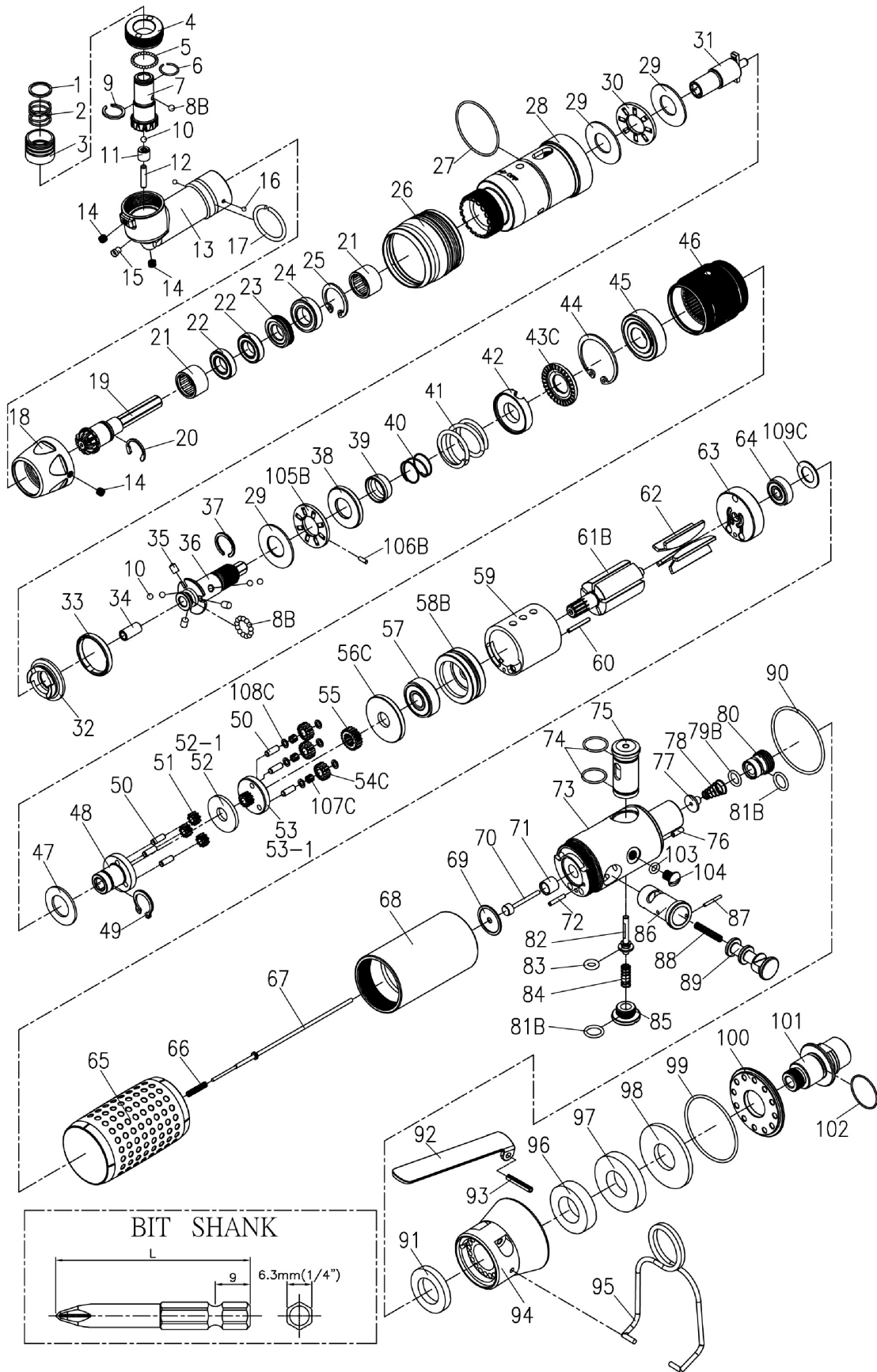


RRI-SA20705

SCREWDRIVER (ANGLE TYPE)

EDITION: C



RRI-SA20705 SCREWDRIVER (ANGLE TYPE)

EDITION: C

Index No.	Part No.	Description	Q'ty	Index No.	Part No.	Description	Q'ty
1	B20S-415	Spring Washer	1	57	00-2332	Ball Bearing (608ZZ)	1
2	B20S-418	Spring	1	58B	B20S-301	Front Plate	1
3	B20S-417	Quick Change Holder	1	59	C20S-302	Cylinder	1
4	CS20R-706	Lock Nut	1	60	00-3344	Spring Pin (Ø2 x 16)	1
5	00-3827	Steel Ball (Ø1/16")	26	61B	CS20S-303	Rotor	1
6	B20S-428B	Anvil Collar B	1	62	B20S-304	Rotor Blade	5
7	B20R-705	Spiral Bevel Gear	1	63	C20S-305	Rear Plate	1
8B	00-3835	Steel Ball (Ø2,5)	14	64	00-2355	Ball Bearing (625Z)	1
9	B20S-428A	Anvil Collar A	1	65	B20S-103	Housing Rubber	1
10	00-3826	Steel Ball (Ø3)	5	66	CS20SL-317	Spring	1
11	00-2416	Needle Bearing (HK0306)	1	68	C20S-101	Motor Housing	1
12	00-3454	Pin (Ø3 x 14L)	1	69	C20SL-525	Washer	1
13	CS20R-701	Angle Housing	1	70	CS20SL-527	Piston	1
14	00-0605	Screw (M4x4L)	3	71	C20SL-526	Guide Ring	1
15	00-4603	Grease Fitting (1/8")	1	72	00-3447	Pin (Ø2 x 12L)	1
16	00-3828	Steel Ball (Ø2)	2	73	B20SL-518	Seat	1
17	CS20R-708	Anvil Collar	1	74	00-41168	O-Ring (Ø12 x Ø1)	2
18	CS20R-702	Lock Nut	1	75	C20SL-530	Valve	1
19	B20R-704	Spiral Bevel Gear	1	76	00-3448	Pin (Ø2,5 x 8L)	1
20	00-3513	Snap Ring (C46)	1	77	CS20SL-514	Shut Block	1
21	00-2415	Needle Bearing (HK1210)	2	78	CS20SL-515	Spring	1
22	00-2377	Ball Bearing (Ø17 x Ø9 x 4t)	2	79B	00-41255	O-Ring (Ø6,5 x Ø1,5)	1
23	CS20R-709	Lock Nut	1	80	C20SL-531	Air Inlet Valve	1
24	00-2380	Ball Bearing (6800ZØ19 x Ø10x5t)	1	81B	00-41254	O-Ring (Ø8 x Ø1,5)	2
25	00-3117	Snap Ring (R19)	1	82	C20SL-510	Pin	1
26	B20S-207	Adjusting Cover	1	83	00-41172	O-Ring (Ø4xØ2)	1
27	00-41222	O-Ring (Ø25 x Ø2)	1	84	C20SL-507	Spring	1
28	B20R-201	Clutch Housing	1	85	216-030	Screw Cap	1
29	00-1516	Washer (Ø12 x Ø26 x 1t)	3	86	C20S-501	Valve Sleeve	1
30	00-2804	Roller Bearing (NTB122601)	1	87	00-3367	Spring Pin (Ø1,5x12L)	1
31	B20R-405	Anvil	1	88	C20S-528	Spring	1
32	B20S-425	Clutch Ring	1	89	C20S-502	Reverse Valve	1
33	B20S-424	Ejector Ring	1	90	00-41223	O-Ring (Ø31 x 1)	1
34	00-6301	DU Bearing (Ø4 x Ø6 x 6L)	1	91	C20S-601	Muffler	1
35	B20S-426	Ejector Pin	3	92	C20SL-504	Trigger	1
36	B20S-416	Transmission Shaft	1	93	00-3308	Spring Pin (Ø3 x 18L)	1
37	B20S-428C	Anvil Collar C	1	94	B20SL-603	Exhaust Deflector	1
38	B20S-433	Spring Seat	1	95	B20S-102	Hanger	1
39	B20S-449	Control Ring	1	96	B20S-601A	Muffler	1
40	B20S-427	Spring	1	97	B20S-601B	Muffler	1
41	B20S-429	Spring	1	98	B20S-601C	Muffler	1
42	B20S-431	Adjusting Lock Ring	1	99	00-41224	O-Ring (Ø38 x Ø1.5)	1
43C	B20S-430-B	Adjusting Nut	1	100	B20S-608	Deflector Cap	1
44	00-3113	Snap Ring (R28)	1	101	B20S-604A	Air Inlet (1/4" PF-19)	1
45	00-2305A	Ball Bearing (6001)	1	101	B20S-604B	Air Inlet (1/4" PT-19)	
46	C20S-440	Internal Gear	1	101	B20S-604C	Air Inlet (1/4" NPT-19)	
47	C20S-441	Washer	1	102	00-41175	O-Ring (Ø13 x Ø1.5)	1
48	C20S-442	Front Gear Cage	1	103	00-41156	O-Ring (Ø3,5 x Ø1,5)	1
49	00-3507	Snap Ring (S12)	1	104	00-1304	Screw (M5 x 6L)	1
50	00-3424	Pin (Ø3 x 8L)	6	105B	B20S-410	Washer	1
52-1	C20S-444B	Washer B (2 mm)	1	106B	00-3471	Pin (Ø2,5 x 4L)	8
53-1	C20S-452B	Rear Gear Cage B Assem.	1	107C	00-3477	Pin (Ø0,5 x 3L)	132
54C	C30S-443A	Planet Gear A	6	108C	33239-WRCA-05	Washer	12
56C	C30S-448	Rear Cover	1	109C	BS30R-160-607	Gasket	1