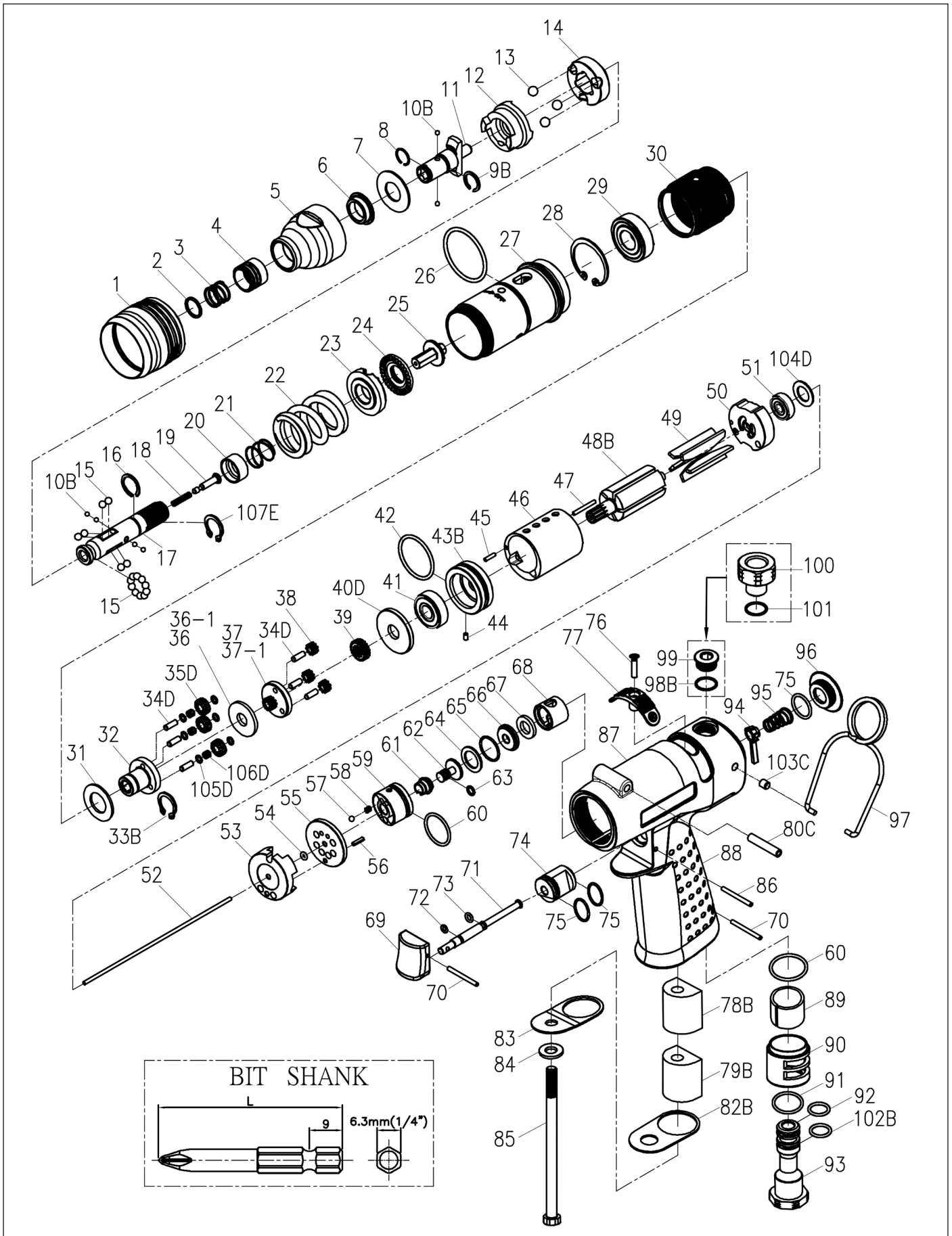


RRI-SP31108

SCREWDRIVER (PISTOL TYPE)

EDITION: E



RRI-SP31108 SCREWDRIVER (PISTOL TYPE)

EDITION: E

Index No.	Part No.	Description	Q'ty	Index No.	Part No.	Description	Q'ty
1	B30S-207	Adjusting Cover	1	57	00-3805	Steel Ball (1/8")	1
2	B20S-415	Spring Washer	1	58	I100-506	Spring	1
3	B20S-418	Spring	1	59	B20-502	Reverse Valve	1
4	B20S-417	Quick Change Holder	1	60	00-41145	O-Ring (Ø18 x Ø1.5)	2
5	B30S-420	Housing Cover	1	61	B20-526	Guide Ring	1
6	B20S-202	Anvil Bushing	1	62	B20-318	Shut Bar	1
7	00-1516	Washer (12x26 x1t)	1	63	00-4190	O-Ring (Ø4 x Ø1)	1
8	B20S-428B	Anvil Collar B	1	64	B20-533	Washer	1
9B	B20S-428A	Anvil Collar A	1	65	00-41211	O-Ring (Ø14 x Ø1)	1
10B	00-3835	Steel Ball (Ø 2.5)	6	66	B20-522	Washer	1
11	B30S-405	Anvil	1	67	B20-319	Bushing	1
12	B30S-425	Clutch Ring	1	68	B20-521	Bushing	1
13	00-3812	Steel Ball (7/32")	3	69	B20-504	Trigger	1
14	B30S-433	Spring Seat	1	70	00-3346	Spring Pin (Ø2 x 20L)	2
15	00-3815	Steel Ball (5/32")	16	71	B20-510	Pin	1
16	B20S-428C	Anvil Collar C	1	72	00-41105	O-Ring (Ø3 x Ø1)	1
17	B30S-416	Transmission Shaft	1	73	00-41231	O-Ring (Ø2.5 x Ø2)	1
18	B30-524	Spring	1	74	B20-530	Valve	1
19	B30S-527	Piston	1	75	00-41175	O-Ring (Ø13 x Ø1.5)	3
20	B30S-449	Control Ring	1	76	00-0511	Screw (M3 x 14L)	1
21	B20S-427	Spring	1	77	B20-503	Reverse Knob	1
22	B30S-429	Spring	1	78B	B20-601D	Muffler	1
23	B30S-431	Adjusting Lock Ring	1	79B	B20-601A	Muffler	1
24	B30S-430	Adjusting Nut	1	80C	B20-108A	Bushing	1
25	B30S-421	Connecting Shaft	1	82B	B20-607-B	Gasket	1
26	00-41226	O-Ring (Ø29 x Ø2)	1	83	B20-608	Deflector Cap	1
27	B30SL-201	Clutch Housing	1	84	B20-609	Washer	1
28	00-3113	Snap Ring (R28)	1	85	00-0149	Screw (M6 x 95L)	1
29	00-2305A	Ball Bearing (6001)	1	86	I100-511	Pin	1
30	C20S-440	Internal Gear	1	87	B20-101	Motor Housing	1
31	C20S-441	Washer	1	88	B20-103	Housing Rubber	1
32	C30S-442A	Front Gear Cage A	1	89	I40-601	Muffler	1
33B	00-3507	Snap Ring (S12)	1	90	B20-603	Exhaust Deflector	1
34D	00-3424	Pin (Ø3 x 8L)	6	91	00-41111	O-Ring (Ø16 x Ø1.5)	1
35D	C30S-443A	Planet Gear A	3	92	00-41247	O-Ring (Ø10.5 x Ø1.5)	1
36-1	C20S-444B	Washer B(2m/m)	1	93	B20-604A	Air Inlet 1/4" PF-19	1
37-1	C20S-452B	Rear Gear Cage B Assem.	1		B20-604B	Air Inlet 1/4" PT-19	
38	C20S-443A	Planet Gear A	3		B20-604C	Air Inlet 1/4" NPT-18	
39	C20S-447	Rotor Gear	1	94	B20-523	Valve Stem	1
40D	C30S-448	Rear Cover	1	95	C20S-515	Spring	1
41	00-2332	Ball Bearing (608ZZ)	1	96	B20-104	Screw Cap	1
42	00-41177	O-Ring (Ø25.12 x Ø1.78)	1	97	I40S-102	Hanger	1
43B	B20S-301	Front Plate	1	98B	00-41254	O-Ring (Ø8 x Ø1.5)	1
44	00-3328	Spring Pin (Ø2 x 4L)	1	99	B20-107	Set Screw	1
45	00-3430	Pin (Ø2 x 8L)	1	100	C20-604A	Air Inlet 1/4" PF-19	1
46	C30S-302	Cylinder	1		C20-604B	Air Inlet 1/4" PT-19	
47	00-3404	Pin (Ø2 x 17.8L)	1		C20-604C	Air Inlet 1/4" NPT-18	
48B	CS30S-303A-B	Rotor A	1	101	00-4118	O-Ring (P10A)	1
49	B30S-304	Rotor Blade	5	102B	00-4107	O-Ring (P9)	1
50	C30S-305	Rear Plate	1	103C	B20-108B	Bushing	2
51	00-2355	Ball Bearing (625Z)	1	104D	BS30R-160-607	Gasket	1
52	B30-314	Valve Stem	1	105D	33239-WRCA-05	Washer	6
53	B30-519	Transfer Valve	1	106D	00-3477	Pin (Ø0.5 x 3L)	66
54	00-41113	O-Ring (Ø2 x Ø1.5)	1	107E	00-3516	Snap Ring (STW-11)	1
55	B20-520	Transmission Washer	1				
56	00-3325	Spring Pin (Ø2 x 6L)	1				