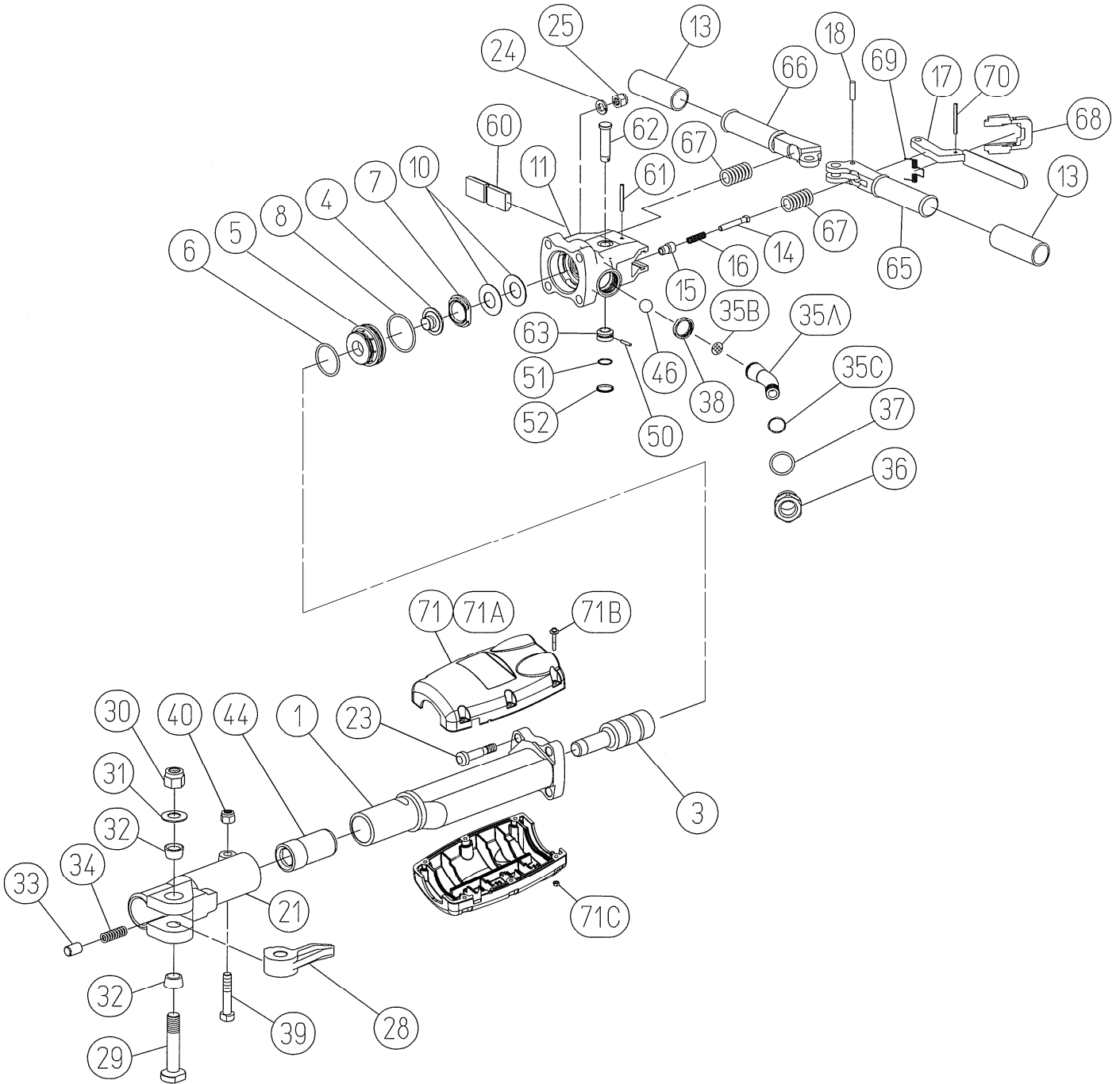


# TPB-40SV

## Parts List

### Exploded View



				MUST REPLACE	100%	70%	50%	30%	10%	Spare Parts Service Chart	
				HIGH WEAR	MEDIUM WEAR	LOW WEAR	NON WEAR	SUBJECT TO EXTERNAL DAMAGE			<p>This service chart is a guide to expectant life of component parts.</p> <p>The replacement levels are based on average tool usage over a one year period.</p> <p>Example : For 10 tools in use : 10 must —replace items will be required per year, 7 high wear items, etc.</p> <p>Note: Quantities must be increased if the tool is in more service or continuous usage.</p> <p>LEGEND                      X—Type of wear, if no other comments apply.                      A—Easily lost or damaged during disassembly and reassembly.</p>
Symbol No.	Parts No.	Q'ty Req.	Description								
1	410231010	1	Cylinder							X	
3	410231040	1	Piston			X					
4	410231150	1	Valve				X				
5	410231190	1	Valve Chest							X	
6	131101045	1	O-Ring P-46	X							
7	410231180	1	Valve Cover							X	
8	131111356	1	O-Ring JASO-3056	X							
10	131313050	2	Coned Disc Spring H-25							X	
11	410227490	1	Back Head							X	
13	136601010	2	Rubber Grip							X	
14	410227C11	1	Valve Pin							X	
15	410227280	1	Valve Pin Bushing							X	
16	130801038	1	Valve Pin Spring			X					
17	410227310	1	Throttle Lever							X	
18	410227330	1	Throttle Lever Pin							X	
21	410231530	1	Front Head							X	
23	410201500	4	Back Head Bolt							X	
24	131303032	4	Spring Washer W1/2							X	
25	134201012	4	Nylon Nut							X	
28	410241610	1	Steel Retainer	X							
29	410231620	1	Steel Retainer Bolt			X					
30	134601019	1	Hex Nylon Nut 3/4-16UNF			X					
31	131313041	1	Coned Disc Spring H-20			X					
32	136301009	2	Steel Retainer Bolt Bushing			X					
33	410241650	1	Steel Retainer Plunger			X					
34	130801042	1	Steel Retainer Spring			X					
35A	410231370	1	Air Inlet Swivel							X	
35B	136801001	1	Air Inlet Screen							X	
35C	131103019	1	O-Ring S-24	X							
36	410231390	1	Air Inlet Swivel Nut							X	
37	131101033	1	O-Ring P-32	X							
38	410231410	1	Air Inlet Swivel Spacer							X	
39	410201540	1	Front Head Bolt							X	
40	134201012	1	Nylon Nut							X	
44	410235570	1	Shank Bushing 1"	X							
46	130505048	1	Polyurethane Rubber Ball 3/4							A	
50	130400043	1	Parallel Pin 4X19.8							X	
51	131117018	1	O-Ring AS568-018	X							
52	130803144	1	Socket Retaining Ring							X	
60	410136D60	1	Back Head Cap			X					
61	130606044	1	Spring Pin 6X44							X	
62	410136A81	1	Center Pin							X	
63	410136C90	1	Center Pin Ring							X	
65	410136070	1	Lever Handle							X	
66	410227080	1	Handle							X	
67	130801064	2	Handle Spring			X					
68	410227760	1	Stop Lever							X	
69	130801034	1	Stop Lever Spring			X					
70	130604040	1	Spring Pin 4X40							X	
71	410231D8C	1	Muffler CP							X	
71A	410231D80	(1)	Muffler (Pair)							X	
71B	132405240	(6)	Screw W/Washer M5X40							X	
71C	134601005	(6)	Nylon Nut M5	A							