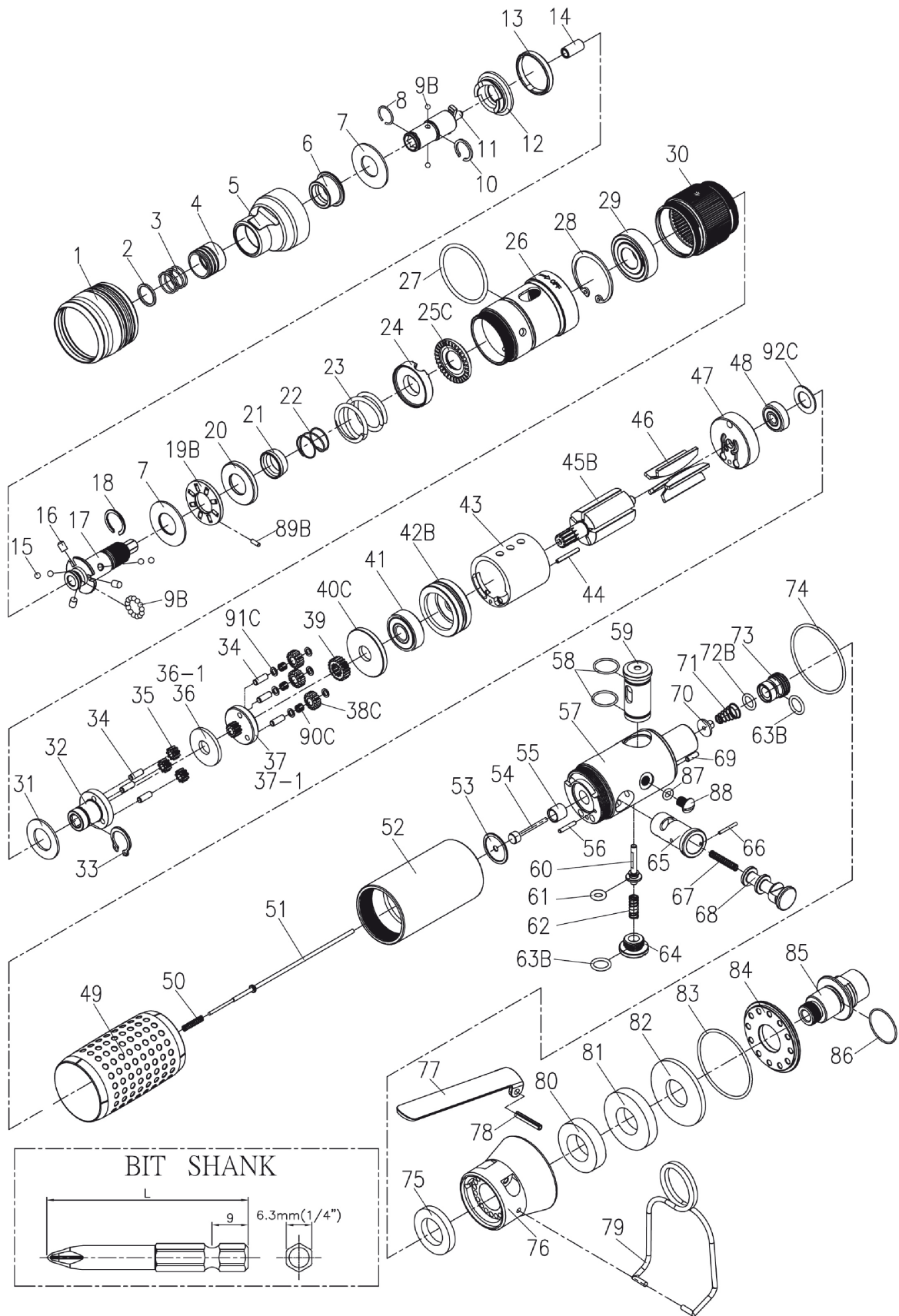


RRI-SL21104

SCREWDRIVER (LEVER START TYPE)

EDITION: C



RRI-SL21104

SCREWDRIVER (LEVER START TYPE)

EDITION: C

Index No.	Part No.	Description	Q'ty	Index No.	Part No.	Description	Q'ty
1	B20S-207	Adjusting Cover	1	48	00-2355	Ball Bearing (625Z Ø16xØ5x5t)	1
2	B20S-415	Spring Washer	1	49	B20S-103	Housing Rubber	1
3	B20S-418	Spring	1	50	CS20SL-317	Spring	1
4	B20S-417	Quick Change Holder	1	51	B20SL-314	Valve Stem	1
5	B20S-420	Housing Cover	1	53	C20SL-525	Washer	1
6	B20S-202	Anvil Bushing	1	54	CS20SL-527	Piston	1
7	00-1516	Washer (Ø16xØ26x1t)	2	55	C20SL-526	Guide Ring	1
8	B20S-428B	Anvil Collar B	1	56	00-3447	Pin (Ø2 x 12L)	1
9B	00-3835	Steel Ball (Ø2,5)	15	57	B20SL-518	Seat	1
10	B20S-428A	Anvil Collar A	1	58	00-41168	O-Ring (Ø12 x Ø1)	2
11	B20S-405	Anvil	1	59	C20SL-530	Valve	1
12	B20S-425	Clutch Ring	1	60	C20SL-510	Pin	1
13	B20S-424	Ejector Ring	1	61	00-41172	O-Ring (Ø4 x Ø2)	1
14	00-6301	DU Bearing (Ø4xØ6x6L)	1	62	C20SL-507	Spring	1
15	00-3826	Steel Ball (Ø3)	4	63B	00-41254	O-Ring (Ø8xØ1,5)	2
16	B20S-426	Ejector Pin	3	64	216-030	Screw Cap	1
17	B20S-416	Transmission Shaft	1	65	C20S-501	Valve Sleeve	1
18	B20S-428C	Anvil Collar C	1	66	00-3367	Spring Pin (Ø1,5 x 14L)	1
19B	B20S-410	Seat	1	67	C20S-528	Spring	1
20	B20S-433	Spring Seat	1	68	C20S-502	Reverse Valve	1
21	B20S-449	Control Ring	1	69	00-3448	Pin (Ø2,5 x 8L)	1
22	B20S-427	Spring	1	70	CS20SL-514	Shut Block	1
23	B20S-429	Spring	1	71	CS20SL-515	Spring	1
24	B20S-431	Adjusting Lock Ring	1	72B	00-41255	O-Ring (Ø6,5xØ1,5)	1
25C	B20S-430-B	Adjusting Nut	1	73	C20SL-531	Air Inlet Valve	1
26	B20SL-201	Clutch Housing	1	74	00-41223	O-Ring (Ø31 x Ø1)	1
27	00-41222	O-Ring (Ø25 x Ø2)	1	75	C20S-601	Muffler	1
28	00-3113	Snap Ring(R28)	1	76	B20SL-603	Exhaust Deflector	1
29	00-2305A	Ball Bearing (6001 Ø28xØ12 x 8t)	1	77	C20SL-504	Trigger	1
30	C20S-440	Internal Gear	1	78	00-3308	Spring Pin (Ø3 x 18L)	1
31	C20S-441	Washer	1	79	B20S-102	Hanger	1
32	C20S-442	Front Gear Cage	1	80	B20S-601A	Muffler	1
33	00-3507	Snap Ring (S12)	1	81	B20S-601B	Muffler	1
34	00-3424	Pin (Ø3 x 8L)	6	82	B20S-601C	Muffler	1
35	C20S-443A	Planet Gear A	3	83	00-41224	O-Ring (Ø38 x Ø41 x Ø1,5)	1
36-1	C20S-444B	Washer B (2 m/m)	1	84	B20S-608	Deflector Cap	1
37-1	C20S-452B	Rear Gear Cage B+ Rear Gear B	1		B20S-604A	Air Inlet (1/4" PF-19)	
38C	C30S-443A	Planet Gear A	3	85	B20S-604B	Air Inlet (1/4" PT-19)	1
39	C20S-447	Rotor Gear	1		B20S-604C	Air Inlet (1/4" NPT-18)	
40C	C30S-448	Rear Cover	1	86	00-41175	O-Ring (Ø13 x Ø16 x Ø1,5)	1
41	00-2332	Ball Bearing (608ZZ Ø22 x Ø8 x 7t)	1	87	00-41156	O-Ring (Ø3,5 x Ø1,5)	1
42B	B20S-301	Front Plate	1	88	00-1304	Screw (M5 x 6L)	1
43	C20S-302	Cylinder	1	89B	00-3471	Pin (Ø2,5 x 4L)	8
44	00-3344	Spring Pin (Ø2 x 16)	1	90C	00-3477	Pin (Ø0,5 x 3L)	66
45B	CS20S-303	Rotor	1	91C	33239-WRCA-05	Washer	6
46	B20S-304	Rotor Blade	5	92C	BS30R-160-607	Gasket	1
47	C20S-305	Rear Plate	1				