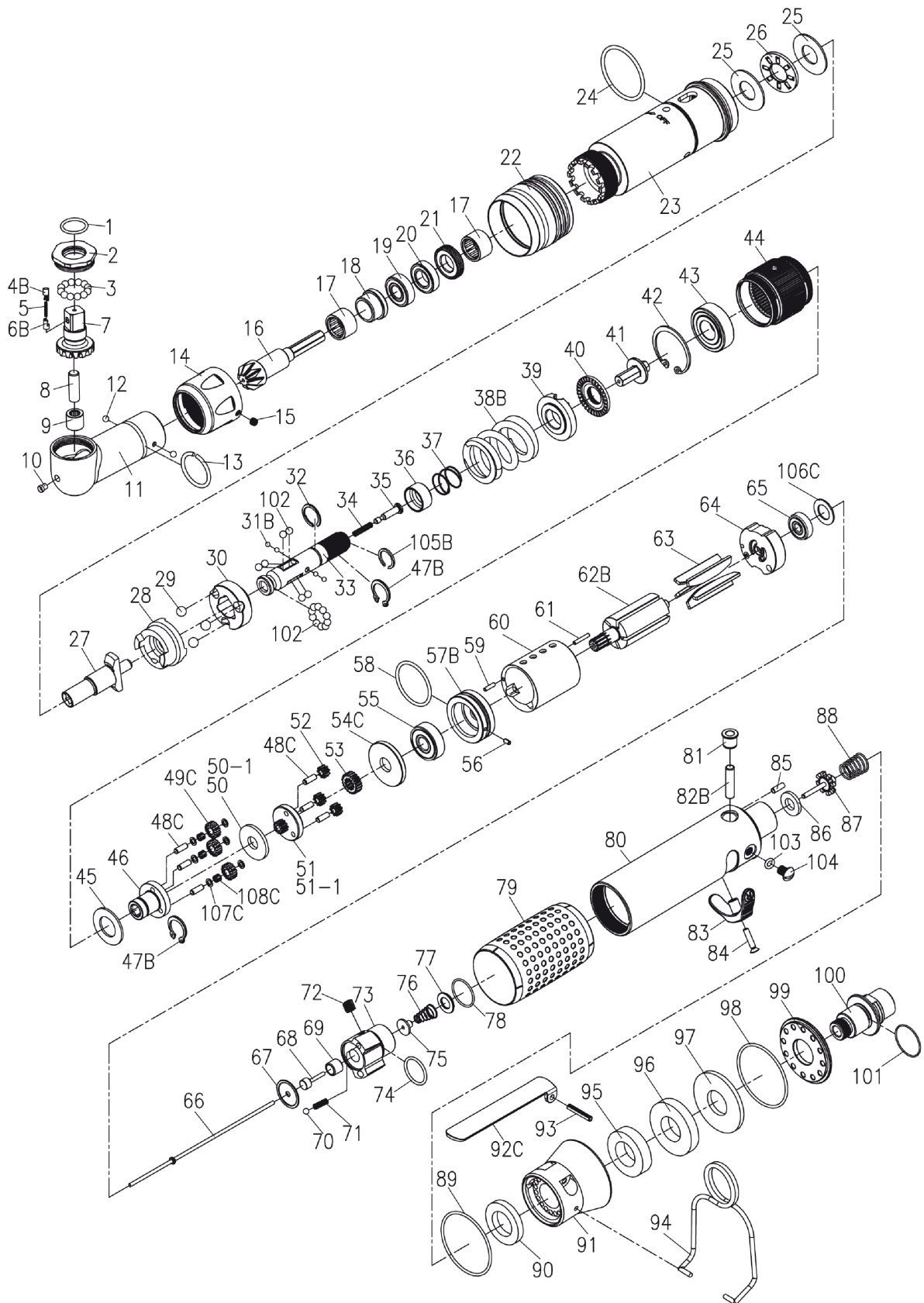


RRI-SA30710W

SCREWDRIVER (ANGLE TYPE)

EDITION: C



RRI-SA30710W

SCREWDRIVER (ANGLE TYPE)

EDITION: C

| Index No. | Part No. | Description | Q'ty | Index No. | Part No. | Description | Q'ty |
|-----------|------------|-------------------------|------|-----------|---------------|-------------------------|------|
| 1 | 00-41175 | O-Ring (Ø13 x Ø1,5) | 1 | 57B | B20S-301 | Front Plate | 1 |
| 2 | CS30R-706 | Lock Nut | 1 | 58 | 00-41177 | O-Ring (Ø25,12 x Ø1,78) | 1 |
| 3 | 00-3824 | Steel Ball (Ø4) | 12 | 59 | 00-3430 | Pin (Ø2x8L) | 1 |
| 4B | I40S-462-B | Upper Pin | 1 | 60 | C30S-302 | Cylinder | 1 |
| 5 | I40S-464 | Spring | 1 | 61 | 00-3447 | Pin (Ø2 x 12L) | 1 |
| 6B | I40S-463-B | Lower Pin | 1 | 62B | CS30S-303A-B | Rotor A | 1 |
| 7 | CS30R-705A | Spiral Bevel Gear | 1 | 63 | B30S-304 | Rotor Blade | 5 |
| 8 | 00-3457 | Pin (Ø6x25L) | 1 | 64 | C30S-305 | Rear Plate | 1 |
| 9 | 00-2418 | Needle Bearing (BK0609) | 1 | 65 | 00-2355 | Ball Bearing (625Z) | 1 |
| 10 | 00-4603 | Grease Fitting | 1 | 66 | B30SL-314 | Valve Stem | 1 |
| 11 | CS30R-701 | Angle Housing | 1 | 67 | C30SL-525 | Washer | 1 |
| 12 | 00-3826 | Steel Ball (Ø3) | 2 | 68 | CS30SL-527 | Piston | 1 |
| 13 | CS20R-708 | Anvil Collar | 1 | 69 | C20SL-526 | Guide Ring | 1 |
| 14 | CS30R-702 | Lock Nut | 1 | 70 | 00-3805 | Steel Ball (1/8") | 1 |
| 15 | 00-0605 | Screw | 1 | 71 | 305F-034 | Spring | 1 |
| 16 | B30R-704 | Spiral Bevel Gear | 1 | 72 | 00-0606 | Screw (M6x6L) | 1 |
| 17 | 00-2415 | Needle Bearing (HK1210) | 2 | 73 | C30SL-502 | Reverse Valve | 1 |
| 18 | CS30R-703 | Bushing | 1 | 74 | 00-41117 | O-Ring (Ø15 x Ø1,5) | 1 |
| 19 | 00-2372 | Ball Bearing (698Z) | 1 | 75 | CS30SL-514 | Shut Block | 1 |
| 20 | 00-2380 | Ball Bearing (6800Z) | 1 | 76 | CS20SL-515 | Spring | 1 |
| 21 | CS30R-709 | Lock Nut | 1 | 77 | C30SL-533 | Washer | 1 |
| 22 | B30S-207 | Adjusting Cover | 1 | 78 | 00-41217 | O-Ring (Ø16xØ1) | 1 |
| 23 | B30R-201 | Clutch Housing | 1 | 79 | B20S-103 | Housing Rubber | 1 |
| 24 | 00-41226 | O-Ring (Ø29xØ2) | 1 | 80 | B30SL-101 | Motor Housing | 1 |
| 25 | 00-1516 | Washer (Ø16xØ26x1t) | 2 | 81 | I40S-509 | Bushing | 1 |
| 26 | 00-2804 | Thrust Bearing | 1 | 82B | IS40S-510 | Pin | 1 |
| 27 | B30R-405 | Anvil | 1 | 83 | C30S-503 | Reverse Knob | 1 |
| 28 | B30S-425 | Clutch Ring | 1 | 84 | 00-0509 | Screw (M3 x 16L) | 1 |
| 29 | 00-3812 | Steel Ball (7/32") | 3 | 85 | 00-3448 | Pin (Ø2,5 x 8L) | 1 |
| 30 | B30S-433 | Spring Seat | 1 | 86 | I40S-508 | Bushing | 1 |
| 31B | 00-3835 | Steel Ball (Ø2,5) | 4 | 87 | 305C-021 | Valve Stem | 1 |
| 32 | B20S-428C | Anvil Collar C | 1 | 88 | C30S-515 | Spring | 1 |
| 33 | B30S-416 | Transmission Shaft | 1 | 89 | 00-41223 | O-Ring (Ø31 x Ø1) | 1 |
| 34 | B30-524 | Spring | 1 | 90 | C30SL-601 | Muffler | 1 |
| 35 | B30S-527 | Piston | 1 | 91 | B30SL-603 | Exhaust Deflector | 1 |
| 36 | B30S-449 | Control Ring | 1 | 92C | C20SL-504 | Trigger | 1 |
| 37 | B20S-427 | Spring | 1 | 93 | 00-3308 | Spring Pin (Ø3x18L) | 1 |
| 38B | B30S-429B | Spring | 1 | 94 | B20S-102 | Hanger | 1 |
| 39 | B30S-431 | Adjusting Lock Ring | 1 | 95 | B30S-601A | Muffler | 1 |
| 40 | B30S-430 | Adjusting Nut | 1 | 96 | B30S-601B | Muffler | 1 |
| 41 | B30S-421 | Connecting Shaft | 1 | 97 | B30S-601C | Muffler | 1 |
| 42 | 00-3113 | Snap Ring (R28) | 1 | 98 | 00-41224 | O-Ring (Ø38xØ1,5) | 1 |
| 43 | 00-2305A | Ball Bearing (6001) | 1 | 99 | B30S-608 | Deflector Cap | 1 |
| 44 | C20S-440 | Internal Gear | 1 | 100 | B30S-604A | Air Inlet (1/4" PF-19) | 1 |
| 45 | C20S-441 | Washer | 1 | 100 | B30S-604B | Air Inlet (1/4" PT-19) | |
| 46 | C30S-442A | Front Gear Cage A | 1 | 100 | B30S-604C | Air Inlet (1/4" NPT-19) | |
| 47B | 00-3507 | Snap Ring (S12) | 2 | 101 | 00-41111 | O-Ring (Ø16xØ1,5) | 1 |
| 48C | 00-3424 | Pin (Ø3x8L) | 6 | 102 | 00-3815 | Steel Ball (5/32") | 16 |
| 49C | C30S-443A | Planet Gear A | 3 | 103 | 00-41156 | O-Ring (Ø3,5xØ1,5) | 1 |
| 50-1 | C20S-444B | Washer B (2 m/m) | 1 | 104 | 00-1304 | Screw (M5 x 6L) | 1 |
| 51-1 | C20S-452B | Rear Gear Cage B Assem. | 1 | 105B | B20S-428A | Anvil Collar A | 1 |
| 54C | C30S-448 | Rear Cover | 1 | 106C | BS30R-160-607 | Gasket | 1 |
| 55 | 00-2332 | Ball Bearing (608ZZ) | 1 | 107C | 33239-WRCA-05 | Washer | 6 |
| 56 | 00-3328 | Spring Pin (Ø2 x 4L) | 1 | 108C | 00-3477 | Pin (Ø0,5 x 3L) | 66 |