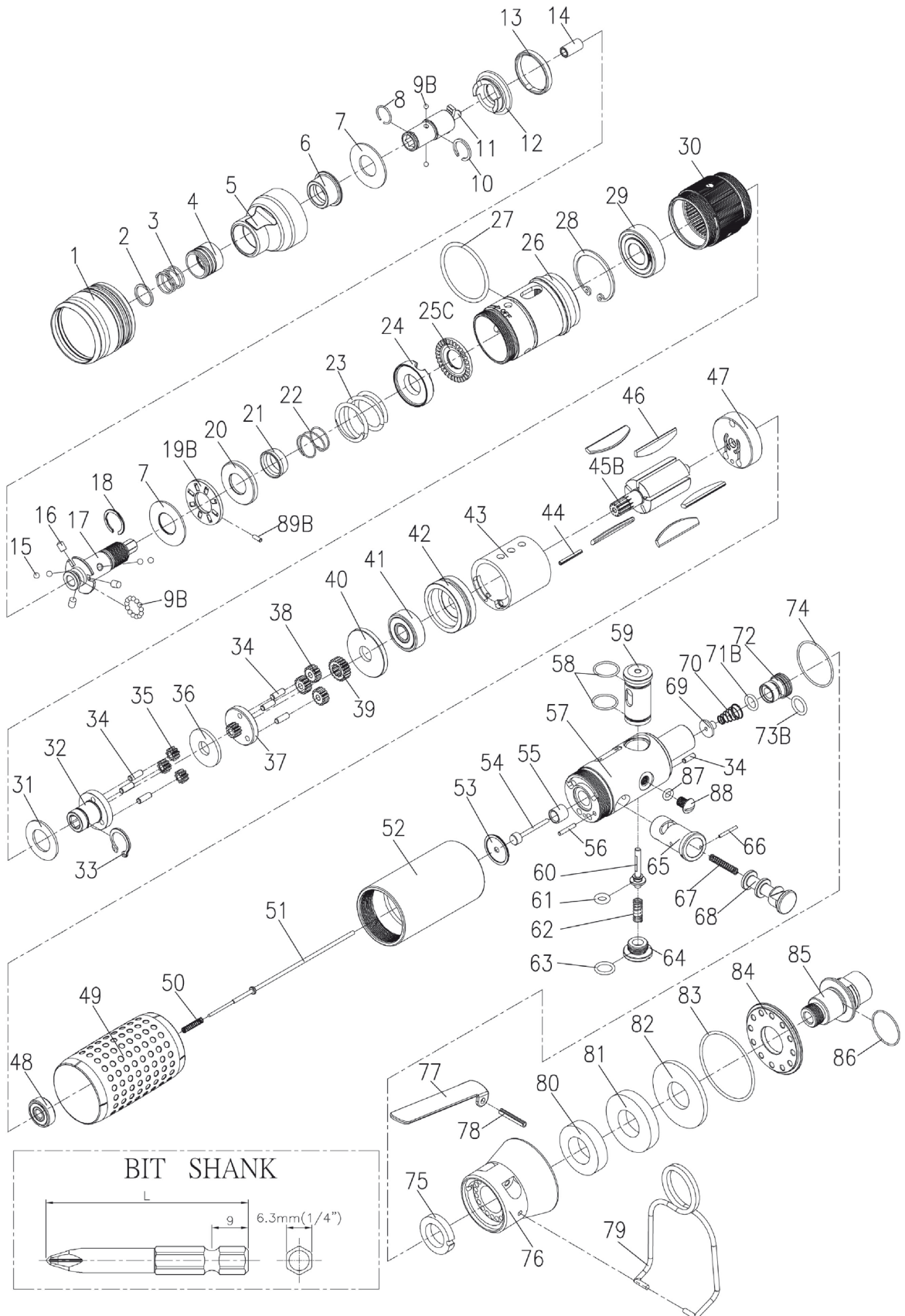


RRI-SL10902

SCREWDRIVER (LEVER START TYPE)

EDITION: C



RRI-SL10902

SCREWDRIVER (LEVER START TYPE)

EDITION: C

Index No.	Part No.	Description	Q'ty
1	B10S-207	Adjusting Cover	1
2	B20S-415	Spring Washer	1
3	B20S-418	Spring	1
4	B20S-417	Quick Change Holder	1
5	B20S-420	Housing Cover	1
6	B20S-202	Anvil Bushing	1
7	00-1516	Washer (Ø12xØ26x1t)	2
8	B20S-428B	Anvil Collar B	1
9B	00-3835	Steel Ball (Ø2,5)	15
10	B20S-428A	Anvil Collar A	1
11	B20S-405	Anvil	1
12	B20S-425	Clutch Ring	1
13	B20S-424	Ejector Ring	1
14	00-6301	DU Bearing (Ø4xØ6x6L)	1
15	00-3826	Steel Ball (Ø3)	4
16	B20S-426	Ejector Pin	3
17	B10S-416	Transmission Shaft	1
18	B20S-428C	Anvil Collar C	1
19B	B20S-410	Washer	1
20	B20S-433	Spring Seat	1
21	B20S-449	Control Ring	1
22	B20S-427	Spring	1
23	B10S-429	Spring	1
24	B20S-431	Adjusting Lock Ring	1
25C	B20S-430-B	Adjusting Nut	1
26	B10SL-201	Clutch Housing	1
27	00-41222	O-Ring (Ø25 x Ø2)	1
28	00-3110	Snap Ring (R22)	1
29	00-2318A	Ball Bearing (EE3 Ø9,5xØ22,2x5,56t)	1
30	B10S-440	Internal Gear	1
31	C10S-441	Washer	1
32	C10S-442	Front Gear Cage	1
33	00-3512	Snap Ring (C37)	1
34	00-3448	Pin (Ø2,5x8L)	7
35	C10S-443A	Planet Gear A	3
37	C10S-452	Rear Gear Cage	1
38	C10S-443B	Planet Gear B	3
40	C10S-448	Rear Cover	1
41	00-2347	Ball Bearing (626ZZ Ø19xØ6x6t)	1
42	C10S-301	Front Plate	1
43	C10S-302	Cylinder	1
44	00-3362	Spring Pin (Ø1,5x16)	1
45B	CS10S-303	Rotor	1
46	B10S-304	Rotor Blade	4
47	C10S-305	Rear Plate	1

Index No.	Part No.	Description	Q'ty
48	00-2370	Ball Bearing(695Z Ø13xØ5x4t)	1
49	B10S-103	Housing Rubber	1
50	CS20SL-317	Spring	1
51	B10SL-314	Valve Stem	1
52	C10S-101	Motor Housing	1
53	C10SL-525	Washer	1
54	CS10SL-527	Piston	1
55	C20SL-526	Guide Ring	1
56	00-3447	Pin (Ø2 x 12L)	1
57	B10SL-518	Seat	1
58	00-41180	O-Ring (Ø9xØ1)	2
59	C10SL-530	Valve	1
60	C10SL-510	Pin	1
61	00-41178	O-Ring (Ø2,5xØ1,5)	1
62	C20S-450	Spring	1
63	00-41140	O-Ring (Ø5,5xØ1,5)	1
64	C10SL-529	Screw Cap	1
65	C10S-501	Valve Sleeve	1
66	00-3366	Spring Pin (Ø1,5x10L)	1
67	C20S-528	Spring	1
68	C10S-502	Reverse Valve	1
69	CS10SL-514	Shut Block	1
70	CS20SL-515	Spring	1
71B	00-41256	O-Ring (Ø4,5xØ1,5)	1
72	C10SL-531	Air Inlet Valve	1
73B	00-41255	O-Ring (Ø6,5xØ1,5)	1
74	00-41225	O-Ring (Ø25xØ27xØ1)	1
75	C10S-601	Muffler	1
76	B10SL-603	Exhaust Deflector	1
77	C08SL-504	Trigger	1
78	00-3308	Spring Pin (Ø3x18L)	1
79	B20S-102	Hanger	1
80	B10S-601A	Muffler	1
81	B10S-601B	Muffler	1
82	B10S-601C	Muffler	1
83	00-4174	O-Ring (Ø31 x Ø1,5)	1
84	B10S-608	Deflector Cap	1
85	B10S-604A	Air Inlet (1/4" PF-19)	1
	B10S-604B	Air Inlet (1/4" PT-19)	
	B10S-604C	Air Inlet (1/4" NPT-18)	
86	00-4157	O-Ring (Ø10 x 13 x Ø1,5)	1
87	00-41156	O-Ring (Ø3,5xØ1,5)	1
88	00-1304	Screw (M5 x 6L)	1
89B	00-3471	Pin (Ø2,5 x 4L)	8