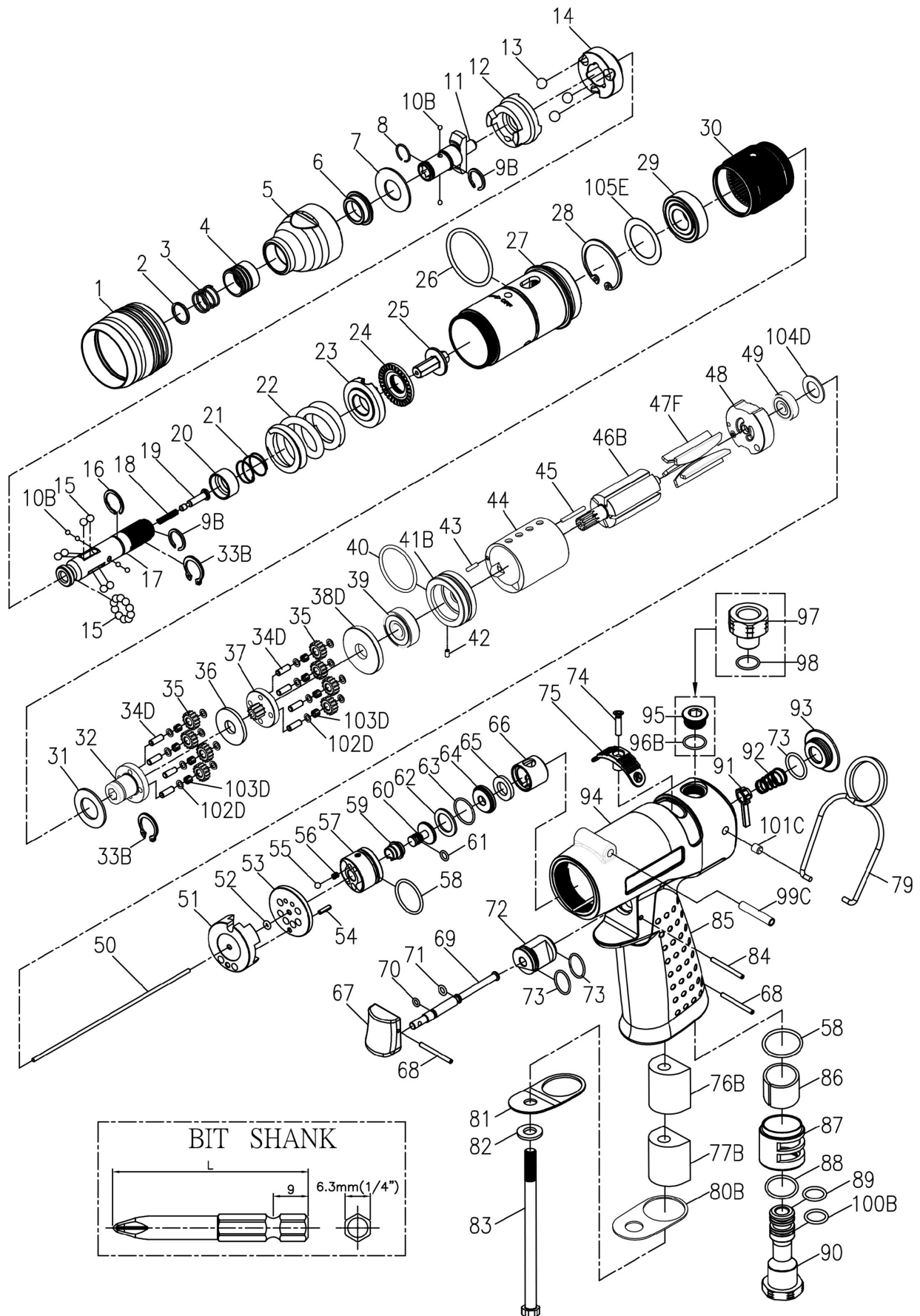


RRI-SP30511

SCREWDRIVER (PISTOL TYPE)

EDITION: F



RRI-SP30511 SCREWDRIVER (PISTOL TYPE)

EDITION: F

Index No.	Part No.	Description	Q'ty	Index No.	Part No.	Description	Q'ty
1	B30S-207	Adjusting Cover	1	55	00-3805	Steel Ball(1/8")	1
2	B20S-415	Spring Washer	1	56	I100-506	Spring	1
3	B20S-418	Spring	1	57	B20-502	Reverse Valve	1
4	B20S-417	Quick Change Holder	1	58	00-41145	O-Ring(Ø18xØ1.5)	2
5	B30S-420	Housing Cover	1	59	B20-526	Guide Ring	1
6	B20S-202	Anvil Bushing	1	60	B20-318	Shut Bar	1
7	00-1516	Washer(Ø12xØ26 x1t)	1	61	00-4190	O-Ring(Ø4xØ1)	1
8	B20S-428B	Anvil Collar B	1	62	B20-533	Washer	1
9B	B20S-428A	Anvil Collar A	2	63	00-41211	O-Ring(Ø14xØ1)	1
10B	00-3835	Steel Ball(Ø2.5)	6	64	B20-522	Washer	1
11	B30S-405	Anvil	1	65	B20-319	Bushing	1
12	B30S-425	Clutch Ring	1	66	B20-521	Bushing	1
13	00-3812	Steel Ball(7/32")	3	67	B20-504	Trigger	1
14	B30S-433	Spring Seat	1	68	00-3346	Spring Pin(Ø2x20L)	2
15	00-3815	Steel Ball(5/32")	16	69	B20-510	Pin	1
16	B20S-428C	Anvil Collar C	1	70	00-41105	O-Ring(Ø3xØ1)	1
17	B30S-416	Transmission Shaft	1	71	00-41231	O-Ring(Ø2.5xØ2)	1
18	B30-524	Spring	1	72	B20-530	Valve	1
19	B30S-527	Piston	1	73	00-41175	O-Ring(Ø13xØ1.5)	3
20	B30S-449	Control Ring	1	74	00-0511	Screw(M3x14L)	1
21	B20S-427	Spring	1	75	B20-503	Reverse Knob	1
22	B30S-429	Spring	1	76B	B20-601D	Muffler	1
23	B30S-431	Adjusting Lock Ring	1	77B	B20-601A	Muffler	1
24	B30S-430	Adjusting Nut	1	79	I40S-102	Hanger	1
25	B30S-421	Connecting Shaft	1	80B	B20-607-B	Gasket	1
26	00-41226	O-Ring(Ø29xØ2)	1	81	B20-608	Deflector Cap	1
27	B30SL-201	Clutch Housing	1	82	B20-609	Washer	1
28	00-3113	Snap Ring(R28)	1	83	00-0149	Screw(M6x95L)	1
29	00-2305A	Ball Bearing(6001)	1	84	I100-511	Pin	1
30	B30S-440	Internal Gear	1	85	B20-103	Housing Rubber	1
31	C20S-441	Washer	1	86	I40-601	Muffler	1
32	C30S-442B	Front Gear Cage B	1	87	B20-603	Exhaust Deflector	1
33B	00-3507	Snap Ring(S12)	2	88	00-41111	O-Ring(Ø16xØ1.5)	1
34D	00-3424	Pin(Ø3x8L)	8	89	00-41247	O-Ring(Ø10.5xØ1.5)	1
35	C30S-443B	Planet Gear B	8	90	B20-604A	Air Inlet (1/4"PF-19)	1
36	C20S-444B	Washer B(2m/m)	1		B20-604B	Air Inlet (1/4"PT-19)	
37	C30S-452B	Rear Gear Cage B Assem.	1		B20-604C	Air Inlet (1/4"NPT-18)	
38D	C30S-448	Rear Cover	1	91	B20-523	Valve Stem	1
39	00-2332	Ball Bearing(608ZZ)	1	92	C20S-515	Spring	1
40	00-41177	O-Ring(Ø25.12xØ1.78)	1	93	B20-104	Screw Cap	1
41B	B20S-301	Front Plate	1	94	B20-101	Motor Housing	1
42	00-3328	Spring Pin(Ø2x4L)	1	95	B20-107	Set Screw	1
43	00-3430	Pin(Ø2x8L)	1	96B	00-41254	O-Ring(Ø8xØ1.5)	1
44	C30S-302	Cylinder	1	97	C20-604A	Air Inlet (1/4"PF-19)	1
45	00-3404	Pin(Ø2x17.8L)	1		C20-604B	Air Inlet (1/4"PT-19)	
46B	CS30S-303B-B	Rotor B	1		C20-604C	Air Inlet (1/4"NPT-18)	
47F	BD30S-304D	Rotor Blade	5	98	00-4118	O-Ring (P10A)	1
48	C30S-305	Rear Plate	1	99C	B20-108A	Bushing	1
49	00-2355	Ball Bearing(625Z)	1	100B	00-4107	O-Ring (P9)	1
50	B30-314	Valve Stem	1	101C	B20-108B	Bushing	2
51	B30-519	Transfer Valve	1	102D	33239-WRCA-05	Washer	16
52	00-41113	O-Ring(Ø2xØ1.5)	1	103D	00-3477	Pin(Ø0.5x3L)	176
53	B20-520	Transmission Washer	1	104D	BS30R-160-607	Gasket	1
54	00-3325	Spring Pin(Ø2x6L)	1	105E	C20S-422	Washer	1