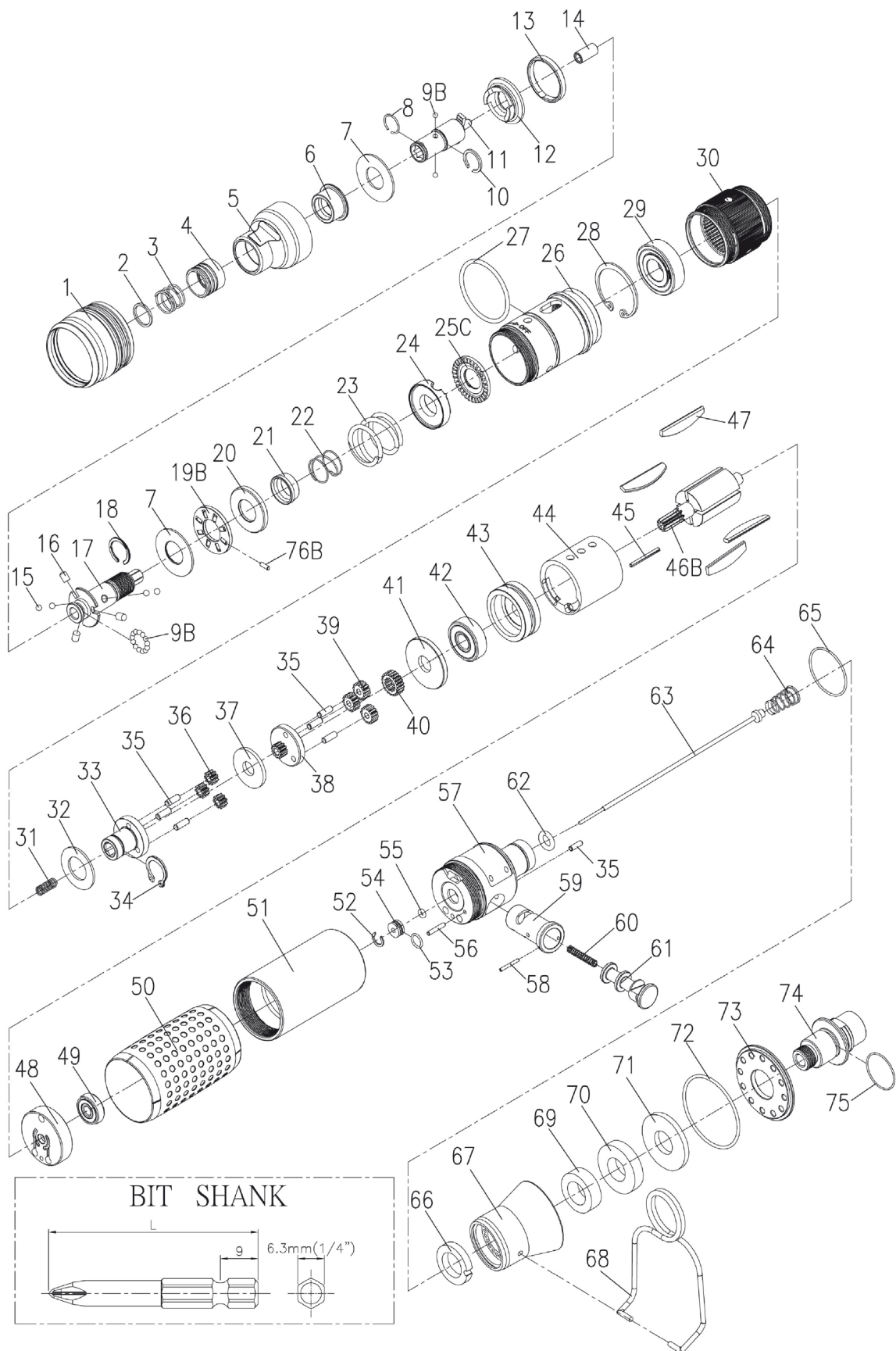


RRI-SD11602

SCREWDRIVER (PUSH START TYPE)

EDITION: C



RRI-SD11602

SCREWDRIVER (PUSH START TYPE)

EDITION: C

| Index No. | Part No. | Description | Q'ty |
|-----------|------------|-------------------------------------|------|
| 1 | B10S-207 | Adjusting Cover | 1 |
| 2 | B20S-415 | Spring Washer | 1 |
| 3 | B20S-418 | Spring | 1 |
| 4 | B20S-417 | Quick Change Holder | 1 |
| 5 | B20S-420 | Housing Cover | 1 |
| 6 | B20S-202 | Anvil Bushing | 1 |
| 7 | 00-1516 | Washer (Ø12xØ26x1t) | 2 |
| 8 | B20S-428B | Anvil Collar B | 1 |
| 9B | 00-3835 | Steel Ball (Ø2,5) | 15 |
| 10 | B20S-428A | Anvil Collar A | 1 |
| 11 | B20S-405 | Anvil | 1 |
| 12 | B20S-425 | Clutch Ring | 1 |
| 13 | B20S-424 | Ejector Ring | 1 |
| 14 | 00-6301 | DU Bearing (Ø4xØ6x6L) | 1 |
| 15 | 00-3826 | Steel Ball (Ø3) | 4 |
| 16 | B20S-426 | Ejector Pin | 3 |
| 17 | B10S-416 | Transmission Shaft | 1 |
| 18 | B20S-428C | Anvil Collar C | 1 |
| 19B | B20S-410 | Washer | 1 |
| 20 | B20S-433 | Spring Seat | 1 |
| 21 | B20S-449 | Control Ring | 1 |
| 22 | B20S-427 | Spring | 1 |
| 23 | B10S-429 | Spring | 1 |
| 24 | B20S-431 | Adjusting Lock Ring | 1 |
| 25C | B20S-430-B | Adjusting Nut | 1 |
| 26 | B10S-201 | Clutch Housing | 1 |
| 27 | 00-41222 | O-Ring (Ø25xØ2) | 1 |
| 28 | 00-3110 | Snap Ring(R22) | 1 |
| 29 | 00-2318A | Ball Bearing (EE3 Ø9,5xØ22,2x5,56t) | 1 |
| 30 | B10S-440 | Internal Gear | 1 |
| 31 | C20S-450 | Spring | 1 |
| 32 | C10S-441 | Washer | 1 |
| 33 | C10S-442 | Front Gear Cage | 1 |
| 34 | 00-3512 | Snap Ring (C37) | 1 |
| 35 | 00-3448 | Pin (Ø2,5x8L) | 7 |
| 36 | C10S-443A | Planet Gear A | 6 |
| 37 | C10S-444 | Washer | 1 |
| 38 | C10S-452 | Rear Gear Cage | 1 |
| 40 | C10S-447 | Rotor Gear | 1 |

| Index No. | Part No. | Description | Q'ty |
|-----------|-----------|--------------------------------|------|
| 41 | C10S-448 | Rear Cover | 1 |
| 42 | 00-2347 | Ball Bearing (626ZZ Ø19xØ6x6t) | 1 |
| 43 | C10S-301 | Front Plate | 1 |
| 44 | C10S-302 | Cylinder | 1 |
| 45 | 00-3362 | Spring Pin (Ø1,5x16) | 1 |
| 46B | C10S-303 | Rotor | 1 |
| 47 | B10S-304 | Rotor Blade | 4 |
| 48 | C10S-305 | Rear Plate | 1 |
| 49 | 00-2370 | Ball Bearing (695Z Ø13xØ5x4t) | 1 |
| 50 | B10S-103 | Housing Rubber | 1 |
| 51 | C10S-101 | Motor Housing | 1 |
| 52 | 00-3115 | Snap Ring (R8) | 1 |
| 53 | 00-41189 | O-Ring (Ø6xØ1) | 1 |
| 54 | C20S-526 | Guide Ring | 1 |
| 55 | 00-41113 | O-Ring (Ø2xØ1,5) | 1 |
| 56 | 00-3447 | Pin (Ø2x12L) | 1 |
| 57 | C10S-518 | Seat | 1 |
| 58 | 00-3366 | Spring Pin (Ø1,5x10L) | 1 |
| 59 | C10S-501 | Valve Sleeve | 1 |
| 60 | C20S-528 | Spring | 1 |
| 61 | C10S-502 | Reverse Valve | 1 |
| 62 | 00-41176 | O-Ring (Ø4,5xØ2) | 1 |
| 63 | B10S-314 | Valve Stem | 1 |
| 64 | C10S-515 | Spring | 1 |
| 65 | 00-41225 | O-Ring (Ø25x27xØ1) | 1 |
| 66 | C10S-601 | Muffler | 1 |
| 67 | B10S-603 | Exhaust Deflector | 1 |
| 68 | B20S-102 | Hanger | 1 |
| 69 | B10S-601A | Muffler | 1 |
| 70 | B10S-601B | Muffler | 1 |
| 71 | B10S-601C | Muffler | 1 |
| 72 | 00-4174 | O-Ring (Ø31xØ1,5) | 1 |
| 73 | B10S-608 | Deflector Cap | 1 |
| 74 | B10S-604A | Air Inlet 1/4" - PF19 | 1 |
| | B10S-604B | Air Inlet 1/4" - PT19 | |
| | B10S-604C | Air Inlet 1/4" - NPT18 | |
| 75 | 00-4157 | O-Ring (Ø10x13xØ1,5) | 1 |
| 76B | 00-3471 | Pin (Ø2,5x4L) | 8 |