

# NovaTork®

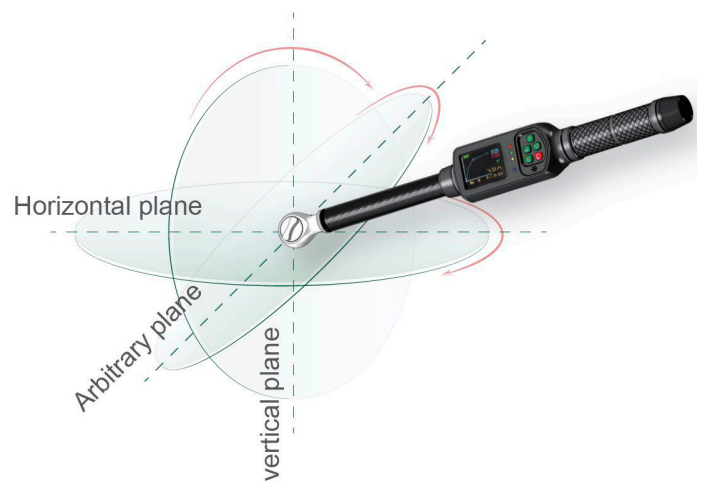
## WLAN ELECTRONIC TORQUE WRENCH WEM-B SERIES

6 ~ 340 Nm

The multifunctional torque wrench not only has all the functions of an electronic torque wrench, but also has angle and WLAN function. The wrench itself can be used independently.

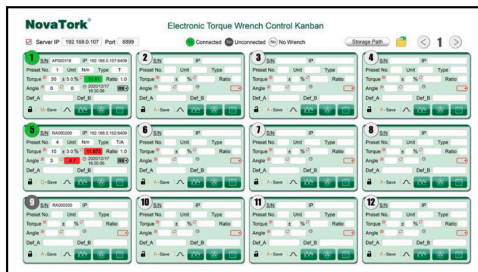
Under the WLAN environment, the wrench and the centralized control centre can realize real-time communication.

24 wrenches can be controlled at the same time.



### Full wrench control & data storage

12 Wrenches per page on the software



### WEMH-B Model

Rectangular Shank Head Holder Torque Wrench

Type	Insert tool mm	Torque Nm	Weight kg	Width mm	Length mm
WEMH960B	9 x 12	6~ 60	0,86	24	402
WEMH9100B	9 x 12	10 ~ 100	0,93	24	432
WEMH14200B	14 x 18	20 ~ 200	1,04	32	505
WEMH14300B	14 x 18	30 ~ 300	1,2	32	585
WEMH14340B	14 x 18	34 ~ 340	1,2	32	585



### WEM-B Model

Reversible Ratchet Head Torque Wrench

Type	Square Drive	Torque Nm	Weight kg	Width mm	Length mm
WEM260B	3/8"	6~ 60	0,99	38	430
WEM2100B	3/8"	10 ~ 100	1,05	38	460
WEM3200B	1/2"	20 ~ 200	1,2	40	526
WEM3300B	1/2"	30 ~ 300	1,35	40	606
WEM3340B	1/2"	34 ~ 340	1,35	40	606

### Optional fittings:



# NovaTork®

## WLAN ELECTRONIC TORQUE WRENCH WEM-B SERIES

### 6 ~ 340 Nm

#### FEATURES

- Accuracy: Torque: CW $\pm$ 1%, CCW $\pm$ 2% +1digit from 10% to 100% of capacity;  
Angle: ( $\pm$ 1% of reading) + ( $\pm$ 1° @ angular speed of 10°/s~180°/s) + ( $\pm$ 1° of test fixture)
- 2.4" OLED color screen display
- Menu operation, easy to set and use
- 7 Torque units are available: Nm, Lbin, Lbft, Kgm, Kgcm, cNm, Ozin
- Two modes: Peak and Track
- Preset group function: 50 sets of parameters can be preset (parameters include torque unit, target value, accuracy, mode, etc.).
- Data Storage: The data of operating the wrench can be automatically sent to the centralized control center and saved. The wrench also has its own memory, which can save 2000 groups of data. If there is no WLAN communication temporarily, the data will be automatically stored in the memory of the wrench and will be uploaded automatically after WLAN is restored.
- Angle function can be applied to the requirement of reaching a certain torque and then turning through a certain angle, or pure angle testing.
- Target values can be set, with five Test Types available.
  - Peak Torque test, target torque value can be set
  - Peak Angle test, target angle value can be set
  - Peak Torque+Angle test, can set target torque and angle values
  - Beta test function, which can measure the torque and angle of tightening a bolt
  - Residual torque function, which can test residual torque
- When the set torque or angle is reached, there're sound, light and handle vibration alarms.
- After one test is completed, there will be data waveform display.
- Application curves can be saved and viewed on the wrench.

#### WEM-B OLED

