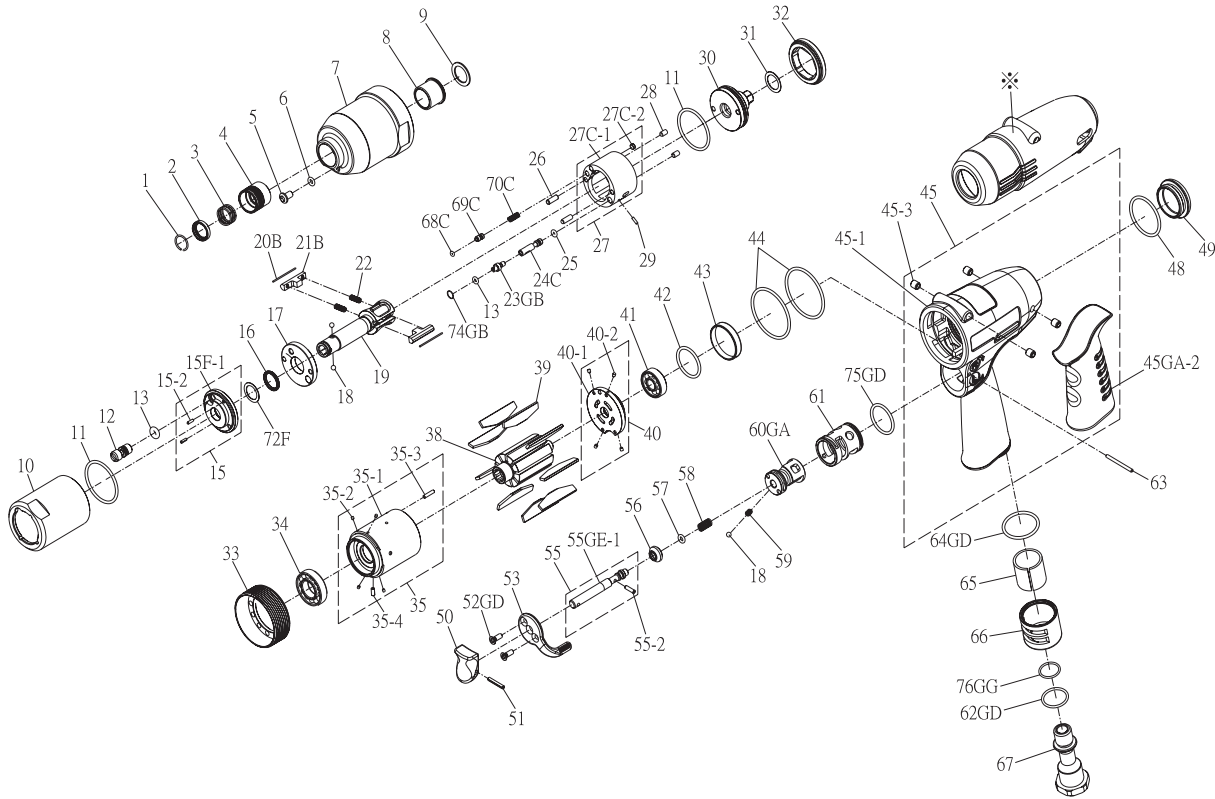


RRI-50A IMPULSE WRENCH



Index No.	Part No.	Description	Q'ty
1	757-026	Anvil Collar	1
2	I40SD-419	Hold Spacer	1
3	I40SD-418	Spring	1
4	I40SD-417	Quick Change Hold	1
5	I100-410	Oil Plug	1
6	00-4153	O-Ring (ø3xø1.5)	1
7	I40S-201	Front Housing	1
8	I40S-202	Bushing	1
9	I40S-424	Washer	1
10	I40S-401	Pulse Cylinder Housing	1
11	00-41127	O-Ring (ø27xø1.5)	2
12	I70-410	Oil Plug	1
13	00-41113	O-Ring (ø2xø1.5)	2
15	420-SW40-283-0403-11	Front Plate Cover, Compl.	1
15F-1	I40S-403-B	Front Plate Cover	1
15-2	00-3318	Spring Pin (ø1.6x5)	2
16	00-2602	X-Ring (ø10.77xø16.01x2.62)	1
17	I40S-408	Front Plate	1
18	00-3813	Steel Ball (1/8")	3
19	I40SD-405	Main Shaft	1
20B	I40S-452	Roller	2
21B	I40S-406-B	Drive Blade	2
22	I40S-407	Spring	2
23GB	I80-411	Adjust Screw	1
24C	IS40S-412-B	Valve	1
25	00-41130	O-Ring (ø2xø1)	1
26	00-3435	Pin (ø3x9)	2
27	420-SW40-283-0404-11	Pulse Cylinder, Compl.	1
27C-1	I40S-404-B	Pulse Cylinder	1
27C-2	I40S-454	Block Cap	1
28	00-3407	Pin (ø3x5)	2
29	00-3436	Pin (ø1.5x5)	1
30	I40S-415	Rear Plate	1
31	I40S-423	Washer	1
32	I40S-402	Lock Nut	1
33	I40S-306	Lock Nut	1
34	00-2348	Ball Bearing (6901ZZ)	1
35	420-PW50-283-0302-10	Cylinder, Compl.	1
35-1	I50-302	Cylinder	1
35-2	I40S-318	Block	4
35-3	00-3356	Spring Pin (ø2x8)	1
35-4	00-3324	Spring Pin (ø2x5)	1
38	I40S-303	Rotor	1
39	I40S-304	Rotor Blade	9
40	420-PW40-283-0305-10	Rear Plate, Compl.	1
40-1	I40-305	Rear Plate	1
40-2	I40S-318	Block	4
41	00-2356	Ball Bearing (607ZZ)	1

Index No.	Part No.	Description	Q'ty
42	00-41135	O-Ring (ø18.77xø1.78)	1
43	I40-307	Rear Cover	1
44	00-41144	O-Ring (ø33.05xø1.78)	2
45	420-PW40-283-0101-10	Motor Housing, Compl.	1
45-1	I40-101	Motor Housing	1
45GA-2	I60-103	Housing Rubber	1
45-3	I40S-108	Bushing	4
48	00-41146	O-Ring (ø21xø1.5)	1
49	I40-104	Nut	1
50	I40-504	Trigger	1
51	00-3354	Spring Pin (ø2x14)	1
52GD	00-0512	Flat Head Screw (M3x8L)	2
53	I100-503	Regulator Knob	1
55	420-PW40-183-0505-30	Valve Stem, Compl.	1
55GE-1	IS40-505C	Valve Stem	1
55-2	00-3356	Spring Pin (ø2x8)	1
56	I100-508	Bushing	1
57	00-41172	O-Ring (ø2.57xø1.78)	1
58	I40-507	Spring	1
59	I100-506	Spring	1
60GA	IS40-502	F/R Valve	1
61	I40-501	Valve Sleeve	1
62GD	00-4121	O-Ring (ø15xø1.5)	1
63	I100-511	Pin	1
64GD	00-41244	O-Ring (ø19xø1.5)	1
65	I40-601	Muffler	1
66	I40-603	Exhaust Deflector	1
67	I40-604A	Air Inlet 1/4"-19PF	1
	I40-604B	Air Inlet 1/4"-19PT	
	I40-604C	Air Inlet 1/4"-18NPT	
68C	00-41173	O-Ring (ø1.42xø1.53)	1
69C	IS40S-421	Pressure Valve	1
70C	I40S-453	Spring	1
72F	I40-409	Back Up Ring	1
74GB	I80-422	Back Up Ring	1
75GD	00-41117	O-Ring (ø15.5xø1.5)	1
76GG	00-4157	O-Ring (ø10xø1.5)	1
*	I40-109	Tool Cover	1
*	I50DRK-YO	Repair kit: Index No - 11(2); 13(2); 16; 22(2); 25; 68C; 72F; 74GB	
*	I50DSK	Service kit: Index No - 17; 19; 20B(2); 21B(2); 30; 39(9); 56; 57; 58	
*	01-0507B	Impulse Oil (1000c.c)	
*	01-0508B	Impulse Oil (100c.c)	

★ Pulse unit includes: I40SD-400ASM

Index No: 10, 11, 12, 13, 15, 16, 17, 19, 20B, 21B, 22, 23GB, 24C, 25, 26, 27, 28, 29, 30, 32, 68C, 69C, 70C, 72F, 74GB