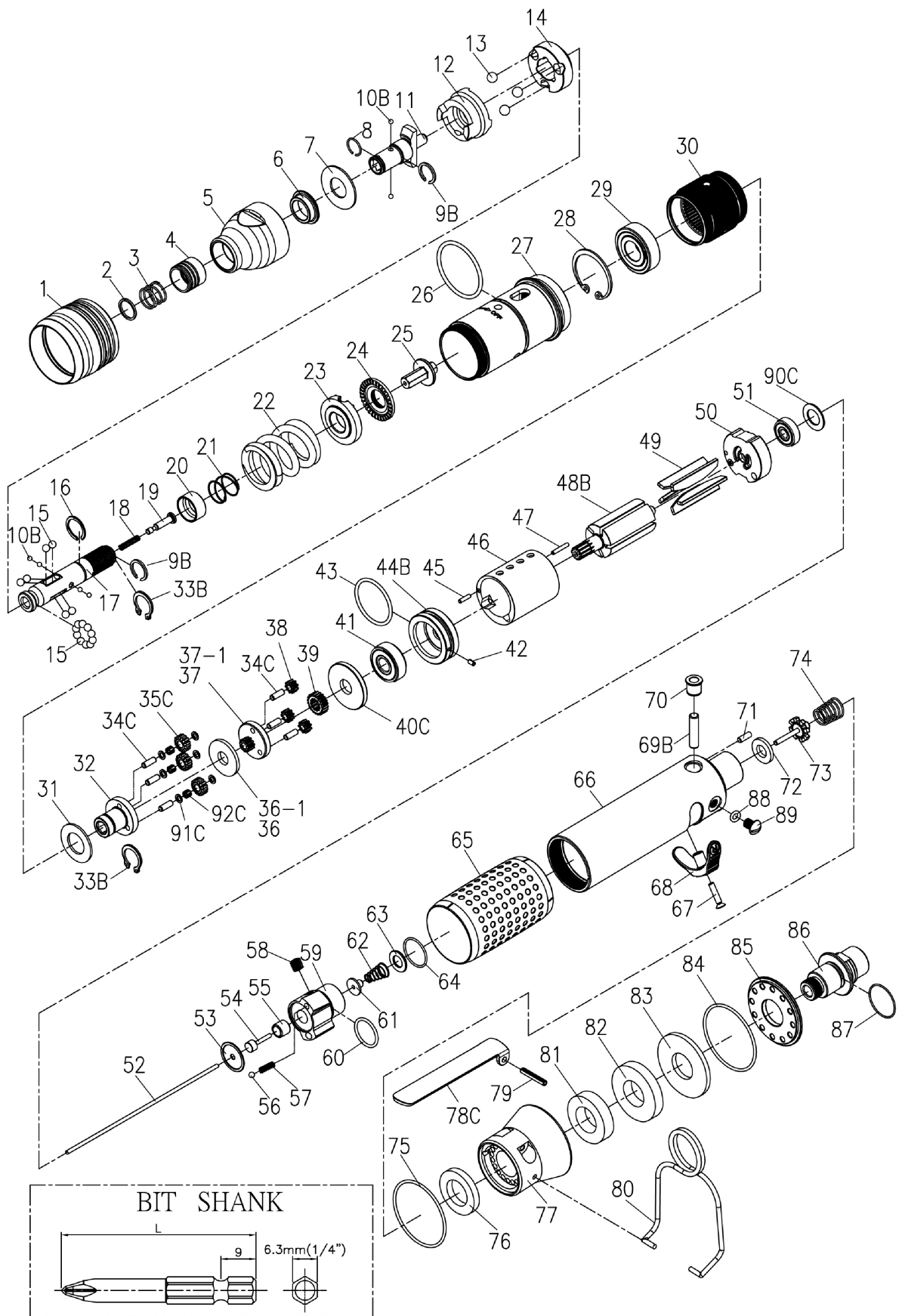


RRI-SL31108

SCREWDRIVER (PUSH START TYPE)

EDITION: C



RRI-SL31108

SCREWDRIVER (PUSH START TYPE)

EDITION: C

Index No.	Part No.	Description	Q'ty
1	B30S-207	Adjusting Cover	1
2	B20S-415	Spring Washer	1
3	B20S-418	Spring	1
4	B20S-417	Quick Change Holder	1
5	B30S-420	Housing Cover	1
6	B20S-202	Anvil Bushing	1
7	00-1516	Washer (Ø12 x Ø26 x 1t)	1
8	B20S-428B	Anvil Collar B	1
9B	B20S-428A	Anvil Collar A	2
10B	00-3835	Steel Ball (Ø2,5)	6
11	B30S-405	Anvil	1
12	B30S-425	Clutch Ring	1
13	00-3812	Steel Ball (7/32")	3
14	B30S-433	Spring Seat	1
15	00-3815	Steel Ball (5/32")	16
16	B20S-428C	Anvil Collar C	1
17	B30S-416	Transmission Shaft	1
18	B30-524	Spring	1
19	B30S-527	Piston	1
20	B30S-449	Control Ring	1
21	B20S-427	Spring	1
22	B30S-429	Spring	1
23	B30S-431	Adjusting Lock Ring	1
24	B30S-430	Adjusting Nut	1
25	B30S-421	Connecting Shaft	1
26	00-41226	O-Ring (Ø29 x Ø2)	1
27	B30SL-201	Clutch Housing	1
28	00-3113	Snap Ring (R28)	1
29	00-2305A	Ball Bearing (6001)	1
30	C20S-440	Internal Gear	1
31	C20S-441	Washer	1
32	C30S-442A	Front Gear Cage A	1
33B	00-3507	Snap Ring (S12)	2
34C	00-3424	Pin (Ø3 x 8L)	6
35C	C30S-443A	Planet Gear A	3
36-1	C20S-444B	Washer B (2 mm)	1
37-1	C20S-452B	Rear Gear Cage B Assem.	1
38	C20S-443A	Planet Gear A	3
39	C20S-447	Rotor Gear	1
40C	C30S-448	Rear Cover	1
41	00-2332	Ball Bearing (608ZZ)	1
42	00-3328	Spring Pin (Ø2 x 4L)	1
43	00-41177	O-Ring (Ø25,12 x Ø1,78)	1
44B	B20S-301	Front Plate	1
45	00-3430	Pin (Ø2 x 8L)	1
46	C30S-302	Cylinder	1
47	00-3447	Pin (Ø2 x 12L)	1
48B	CS30S-303A-B	Rotor A	1

Index No.	Part No.	Description	Q'ty
49	B30S-304	Rotor Blade	5
50	C30S-305	Rear Plate	1
51	00-2355	Ball Bearing (625Z)	1
52	B30SL-314	Valve Stem	1
53	C30SL-525	Washer	1
54	CS30SL-527	Piston	1
55	C20SL-526	Guide Ring	1
56	00-3805	Steel Ball (1/8")	1
57	305F-034	Spring	1
58	00-0606	Screw (M6 x 6L)	1
59	C30SL-502	Reverse Valve	1
60	00-41117	O-Ring (Ø15 x Ø1.5)	1
61	CS30SL-514	Shut Block	1
62	CS20SL-515	Spring	1
63	C30SL-533	Washer	1
64	00-41217	O-Ring (Ø16 x Ø1)	1
65	B20S-103	Housing Rubber	1
66	B30SL-101	Motor Housing	1
67	00-0509	Screw (M3 x 16L)	1
68	C30S-503	Reverse Knob	1
69B	IS40S-510	Pin	1
70	I40S-509	Bushing	1
71	00-3448	Pin (Ø2,5 x 8L)	1
72	I40S-508	Bushing	1
73	305C-021	Valve Stem	1
74	C30S-515	Spring	1
75	00-41223	O-Ring (Ø31 x Ø1)	1
76	C30SL-601	Muffler	1
77	B30SL-603	Exhaust Deflector	1
78C	C20SL-504	Trigger	1
79	00-3308	Spring Pin (Ø3 x 18L)	1
80	B20S-102	Hanger	1
81	B30S-601A	Muffler	1
82	B30S-601B	Muffler	1
83	B30S-601C	Muffler	1
84	00-41224	O-Ring (Ø38 x Ø1.5)	1
85	B30S-608	Deflector Cap	1
86	B30S-604A	Air Inlet (1/4" PF-19)	1
	B30S-604B	Air Inlet (1/4" PT-19)	
	B30S-604C	Air Inlet (1/4" NPT-18)	
87	00-41111	O-Ring (Ø16 x Ø1,5)	1
88	00-41156	O-Ring (Ø3,5 x Ø1,5)	1
89	00-1304	Screw (M5 x 6L)	1
90C	BS30R-160-607	Gasket	1
91C	33239-WRCA-05	Washer	6
92C	00-3477	Pin (Ø0,5 x 3L)	66