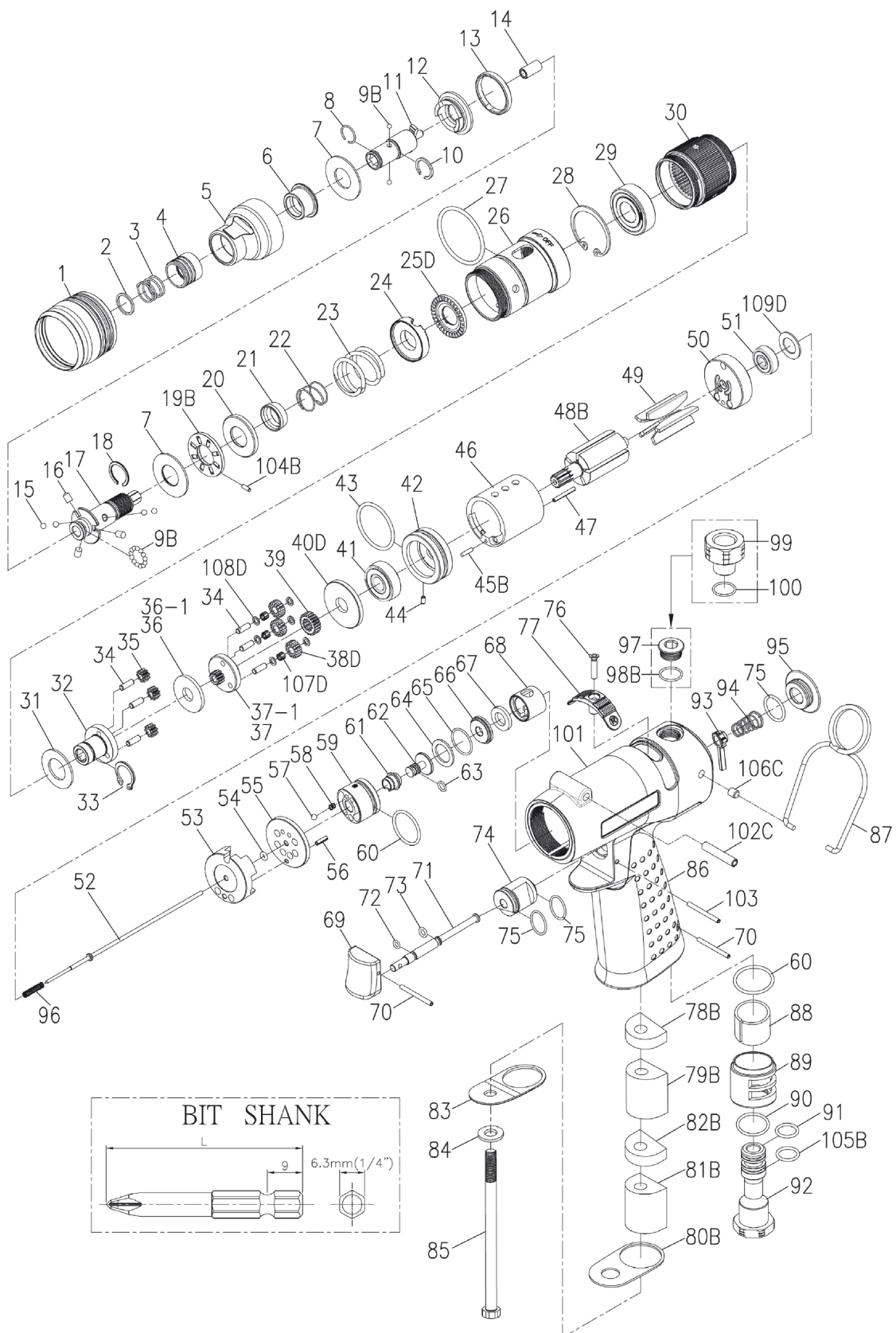


RRI-SP21104

SCREWDRIVER (PISTOL TYPE)

EDITION: D



RRI-SP21104 SCREWDRIVER (PISTOL TYPE)

EDITION: D

Index No.	Part No.	Description	Q'ty
1	B20S-207	Adjusting Cover	1
2	B20S-415	Spring Washer	1
3	B20S-418	Spring	1
4	B20S-417	Quick Change Holder	1
5	B20S-420	Housing Cover	1
6	B20S-202	Anvil Bushing	1
7	00-1516	Washer (Ø12 x Ø26 x 1t)	2
8	B20S-428B	Anvil Collar B	1
9B	00-3835	Steel Ball (Ø2,5)	15
10	B20S-428A	Anvil Collar A	1
11	B20S-405	Anvil	1
12	B20S-425	Clutch Ring	1
13	B20S-424	Ejector Ring	1
14	00-6301	DU Bearing	1
15	00-3826	Steel Ball (Ø3)	4
16	B20S-426	Ejector Pin	3
17	B20S-416	Transmission Shaft	1
18	B20S-428C	Anvil Collar C	1
19B	B20S-410	Washer	1
20	B20S-433	Spring Seat	1
21	B20S-449	Control Ring	1
22	B20S-427	Spring	1
23	B20S-429	Spring	1
24	B20S-431	Adjusting Lock Ring	1
25D	B20S-430-B	Adjusting Nut	1
26	B20SL-201	Clutch Housing	1
27	00-41222	O-Ring (Ø25 x Ø2)	1
28	00-3113	Snap Ring (R28)	1
29	00-2305A	Ball Bearing (6001)	1
30	C20S-440	Internal Gear	1
31	C20S-441	Washer	1
32	C20S-442	Front Gear Cage	1
33	00-3507	Snap Ring (S12)	1
34	00-3424	Pin (Ø3 x 8L)	6
35	C20S-443A	Planet Gear Cage	3
36-1	C20S-444B	Washer B (2 m/m)	1
37-1	C20S-452B	Rear Gear Cage B Assem.	1
39	C20S-447	Rotor Gear	1
40D	C30S-448	Rear Cover	1
41	00-2332	Ball Bearing (608ZZ)	1
42	B20S-301	Front Plate	1
43	00-41177	O-Ring (Ø25,12 x Ø1,78)	1
44	00-3328	Spring Pin (Ø2 x 4L)	1
45B	00-3430	Pin (Ø2 x 8L)	1
46	C20S-302	Cylinder	1
47	00-3344	Spring Pin (Ø2 x 16L)	1
48B	CS20S-303	Rotor	1
49	B20S-304	Rotor Blade	5
50	C20S-305	Rear Plate	1
51	00-2355	Ball Bearing (625Z)	1
52	B20-314	Valve Stem	1
53	B20-519	Transfer Valve	1
54	00-41113	O-Ring (Ø2 x Ø1,5)	1
55	B20-520	Transmission Washer	1
56	00-3325	Spring Pin (Ø2 x 6L)	1
57	00-3805	Steel Ball (1/8")	1
58	I100-506	Spring	1
59	B20-502	Reverse Valve	1

Index No.	Part No.	Description	Q'ty
60	00-41145	O-Ring (Ø18 x Ø1,5)	2
61	B20-526	Guide Ring	1
62	B20-318	Shut Bar	1
63	00-4190	O-Ring (Ø4 x Ø1)	1
64	B20-533	Washer	1
65	00-41211	O-Ring (Ø14 x Ø1)	1
66	B20-522	Washer	1
67	B20-319	Bushing	1
68	B20-521	Bushing	1
69	B20-504	Trigger	1
70	00-3346	Spring Pin (Ø2 x 20L)	2
71	B20-510	Pin	1
72	00-41105	O-Ring (Ø3 x Ø1)	1
73	00-41231	O-Ring (Ø2,5 x Ø2)	1
74	B20-530	Valve	1
75	00-41175	O-Ring (Ø13 x Ø1,5)	3
76	00-0511	Screw (M3 x 14L)	1
77	B20-503	Reverse Knob	1
78B	B20-601B	Muffler	1
79B	B20-601D	Muffler	1
80B	B20-607-B	Gasket	1
81B	B20-601A	Muffler	1
82B	B20-601C	Muffler	1
83	B20-608	Deflector Cap	1
84	B20-609	Washer	1
85	00-0149	Screw (M6 x 95L)	1
86	B20-103	Housing Rubber	1
87	I40S-102	Hanger	1
88	I40-601	Muffler	1
89	B20-603	Exhaust Deflector	1
90	00-41111	O-Ring (Ø16 x Ø1,5)	1
91	00-41247	O-Ring (Ø10,5 x Ø1,5)	1
92	B20-604A	Air Inlet 1/4" PF-19	1
	B20-604B	Air Inlet 1/4" PT-19	
	B20-604C	Air Inlet 1/4" NPT-18	
93	B20-523	Valve Stem	1
94	C20S-515	Spring	1
95	B20-104	Screw Cap	1
96	CS20SL-317	Spring	1
97	B20-107	Set Screw	1
98B	00-41254	O-Ring (Ø8 x Ø1,5)	1
99	C20-604A	Air Inlet 1/4" PF-19	1
	C20-604B	Air Inlet 1/4" PT-19	
	C20-604C	Air Inlet 1/4" NPT-18	
100	00-4118	O-Ring (P10A)	1
101	B20-101	Motor Housing	1
102C	B20-108A	Bushing	1
103	I100-511	Pin	1
104B	00-3471	Pin (Ø2,5 x 4L)	8
105B	00-4107	O-Ring (P9)	1
106C	B20-108B	Bushing	2
107D	00-3477	Pin (Ø0,5 x 3L)	66
108D	33239-WRCA-05	Washer	6
109D	BS30R-160-607	Gasket	1